

A person is shown from the chest up, wearing a blue and white horizontally striped polo shirt. Their right hand and forearm are wrapped in a white, textured medical cast. The background is a solid, bright blue color. The text 'DEAR EVAN HANSEN' is overlaid on the center of the image.

**DEAR
EVAN
HANSEN**

Crossroads Live
presents

DEAR EVAN HANSEN

Book by
STEVEN LEVENSON

Music & Lyrics by
BENJ PASEK & JUSTIN PAUL

MICHAEL FABISCH HATTY RYAN KING BRE CADE CAITLIN SAMS
ALEX PHARO JEFF BROOKS GABRIEL VERNON NUNAG MAKENA JACKSON
MICHAEL PEREZ MONICA BLUME JULIANNA BRAGA BLAKE EHRLICHMAN
JENNA KANTOR JARED SVOBODA

Scenic Design
DAVID KORINS

Projection Design
PETER NIGRINI

Costume Design
EMILY REBHOLZ

Lighting Design
JAPHY WEIDEMAN

Sound Design
NEVIN STEINBERG

Casting
MURNANE CASTING
CHAD ERIC MURNANE, CSA
AMBER SNEAD, CSA

Music Coordinator
TALITHA FEHR

Vocal Arrangements &
Additional Arrangements
JUSTIN PAUL

Music Director
MICHAEL HOPEWELL

Production Stage Manager
ANNA KLEVIT

Company Manager
AARON MARTIN

Tour Management
CROSSROADS LIVE
NORTH AMERICA

Production Manager
GREGG DAMANTI

General Manager
ANDREW TERLIZZI

Executive Producer
JAYNA NEAGLE

Exclusive Tour Direction
THE BOOKING GROUP
MEREDITH BLAIR

Tour Marketing & Publicity
BOND THEATRICAL

Social Media
THINK TANK
MARKETING

Direction Recreated by
DANNY SHARRON
MARK MYARS

Associate Music Supervisor
BEN COHN

Choreography Recreated by
MARK MYARS

Music Supervision, Orchestrations & Additional Arrangements
ALEX LACAMOIRE

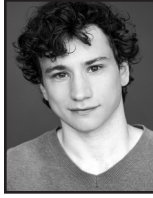
Original Broadway Production Choreography by
DANNY MEFFORD

Original Broadway Production Directed by
MICHAEL GREIF

Originally Produced on Broadway By Stacey Mindich
Originally presented by Arena Stage - July 9, 2015 to August 23, 2015
New York premiere at Second Stage - March 26, 2016 to May 29, 2016

"Dear Evan Hansen" is presented through special arrangement with MUSIC THEATRE INTERNATIONAL, New York, NY. www.mtishows.com

CAST



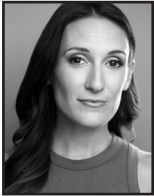
Michael
Fabisch



Hatty Ryan
King



Bre
Cade



Caitlin
Sams



Alex
Pharo



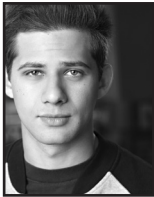
Jeff
Brooks



Gabriel Vernon
Nunag



Makena
Jackson



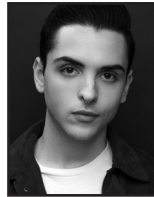
Michael
Perez



Monica
Blume



Julianna
Braga



Blake
Ehrlichman



Jenna
Kantor



Jared
Svoboda

CAST

(listed in alphabetical order)

Heidi Hansen.....	BRE CADE
Larry Murphy.....	JEFF BROOKS
Evan Hansen.....	MICHAEL FABISCH
	(Select performances) MICHAEL PEREZ
Alana Beck.....	MAKENA JACKSON
Zoe Murphy.....	HATTY RYAN KING
Jared Kleinman.....	GABRIEL VERNON NUNAG
Connor Murphy.....	ALEX PHARO
Cynthia Murphy.....	CAITLIN SAMS

VIRTUAL COMMUNITY VOICES

JACOB ANDERSON, NAREE ASHERIAN, KARALYN CLARK, VITA DREW,
ADAM DUNSON, AYLER EVAN, WILL HALEY, TODD HART, ROBERT HYATT,
PAUL JOHNSON, BRANDON NIX, DANICA RUIZ, JOLANA SAMPSON-WILLIAMSON,
CHRISTINE SHEBECK, CONNOR SIMPSON, KATE STEELE, NICOLE UNGER

UNDERSTUDIES

Standbys and understudies never substitute for players

unless a specific announcement for the appearance is made at the time of the performance.

Understudy for Evan Hansen, Connor Murphy, and Jared Kleinman: BLAKE EHRLICHMAN;
Understudy for Evan Hansen, Connor Murphy: MICHAEL PEREZ; Understudy for Heidi Hansen,
Cynthia Murphy: JENNA KANTOR; Understudy for Heidi Hansen, Cynthia Murphy, Alana Beck:
MONICA BLUME; Understudy for Alana Beck, Zoe Murphy: JULIANNA BRAGA; Understudy
for Larry Murphy: JARED SVOBODA.

Dance Captain: MONICA BLUME

DEAR EVAN HANSEN

WILL BE PERFORMED WITH ONE 15-MINUTE INTERMISSION



The use of any recording device, either audio or video, and the taking of photographs, either with or without flash, is strictly prohibited by law. Please turn off all electronic devices such as cellular phones, beepers and watches prior to the beginning of the performance.

MUSICAL NUMBERS

ACT ONE

"Anybody Have a Map?"	Heidi, Cynthia
"Waving Through a Window"	Evan, Company
"For Forever"	Evan
"Sincerely, Me"	Connor, Evan, Jared
"Requiem"	Zoe, Larry, Cynthia
"If I Could Tell Her"	Evan, Zoe
"Disappear"	Connor, Evan, Alana, Jared, Cynthia, Larry, Zoe
"You Will Be Found"	Evan, Company

ACT TWO

"Sincerely, Me" (Reprise)	Connor, Jared
"To Break in a Glove"	Larry, Evan
"Only Us"	Zoe, Evan
"Good for You"	Heidi, Alana, Jared, Evan
"You Will Be Found" (Reprise)	Company
"Words Fail"	Evan
"So Big/So Small"	Heidi
"Finale"	Company

MUSICIANS

Music Director, Keys: MICHAEL HOPEWELL
Associate Music Director, Keys Cover: ALEX GUTIERREZ
Violin/Concertmaster: JEROME KAVA
Viola: E.R. SQUATRITO
Cello: LYDIA PAULOS
Guitar 1: PERRY COWDERY
Guitar 2: JEFFERY DUNN
Bass: ALEX SCHWARZ
Drums: DANIEL SANTIAGO

Keyboard Programmer: RANDY COHEN, RANDY COHEN KEYBOARDS
Ableton Programmers: ENRICO DE TRIZIO, SCOTT WASSERMAN

WHO'S WHO IN THE CAST

MICHAEL FABISCH (*Evan Hansen*). A Minnesota born actor/singer, Michael recently earned his BFA from the University of Michigan. Michael would like to extend his heartfelt gratitude to his brilliant mentors, his loving family and his caring friends for their immense support.

HATTY RYAN KING (*Zoe Murphy*). National Tour debut! Previous credits include Anna in *Frozen: A Musical Spectacular* (Disney Cruise Line), Belle in *Beauty and the Beast* (Studio Tenn), Cathy in *The Last 5 Years* (Everblue Arts). Huge thanks to Murnane Casting, The Price Group, and Mom. @hattyryanking.

BRE CADE (*Heidi Hansen*) is happy to be here! Past favorite credits include: *Rabbit Hole* (Becca), *Next to Normal* (Diana), *Into the Woods* (Baker's Wife), *Evita* (Eva Peron), *Cabaret* (Sally Bowles), and *Hedwig & the Angry Inch* (Yitzhak). Love to Zac. @brefreakincade

CAITLIN SAMS (*Cynthia Murphy*). National Tours: *Charlie and the Chocolate Factory*, *Elf*, *Flashdance*. Regional: *Beautiful*, *CATS*, *Legally Blonde*, *Escape to Margaritaville*, *Brigadoon*, *Kinky Boots*, and many more. BFA from WMU. Big thanks to my family. Big love to Dale. @unsophitacaitlin www.caitlinsams.com

ALEX PHARO (*Connor Murphy*) is thrilled to make his national tour debut! Proud Auburn University deferred student. Credits: *The Wedding Singer* (Robbie), *Natasha, Pierre, and the Great Comet of 1812* (Anatole). Shout out to Mom, Dad, Big Cheese, Larrie, DC, and Zola! @alexpharo

JEFF BROOKS (*Larry Murphy*). He/him. National Tours: *Chicago*, *A Bronx Tale*, *Bullets Over Broadway*, Disney's *Beauty & the Beast*, *Fiddler on the Roof*, *The Sound of Music*, *Oklahoma!*. Netflix's "The Watcher." Thanks to Todd, Bob and everyone at ATB, my loving family, friends, and Stef. @bathrobedbrooks

GABRIEL VERNON NUNAG (*Jared Kleinman*). Professional debut! Proud AMDA LA alumni: BFA. Much love to my family, friends, teachers, and Take 3 Talent! Regional: *Spring Awakening* (Moritz), *In The Heights* (Benny). "I will carve my own path for myself." @gabrielnunag

MAKENA JACKSON (*Alana Beck*) is a New York City based performer, making her National Tour debut in *Dear Evan Hansen!* TV: "Up Here" (Hulu). Makena would like to thank her endless support system for always believing in her. @makenajacksonn

MICHAEL PEREZ (*Alternate Evan Hansen; u/s Connor Murphy*) is honored to join *DEH!* Film/TV: Amazon Prime's *Uncle Frank*, Hallmark's *To Her With Love*, Netflix's "Insatiable," AMC's "Halt and Catch Fire," Sundance "When the Streetlights Go On." Thanks to his family, Stewart Talent, Rikki Dale Management, and Appa. @mikey_prez

MONICA BLUME (*u/s Heidi Hansen, Cynthia Murphy, Alana Beck; Dance Captain*). Some favorite credits include: *Cirque Musica Holiday Wonderland* (National Tour), *Beautiful* (Weathervane Theatre), *Kinky Boots* (Fulton Theatre/Maine State Music Theatre), "Blue Bloods" (CBS). Many thanks to Nicole at MMV. All my love to Justin. For my cousin, Matthew. #youwillbefound

JULIANNA BRAGA (*u/s Alana Beck, Zoe Murphy*) is thrilled to be joining *Dear Evan Hansen* for her National Tour debut! Montclair State BFA Musical Theatre '24 graduate. Recent credits include *Seussical* (Gertrude McFuzz) and *Into the Woods* (Rapunzel). Thanks to my loved ones & teachers for everything. @juliannabragad

BLAKE EHRlichman (*u/s Evan Hansen, Connor Murphy, Jared Kleinman*) is ecstatic to be making his national tour debut! A graduate of Marymount Manhattan College. Huge thanks to the entire *DEH* team! Love to Mom, Dad, Brandon, family and friends — for always believing. @blakeehrllichman

WHO'S WHO IN THE CAST

JENNA KANTOR (*u/s Heidi Hansen, Cynthia Murphy*) is thrilled to join the *DEH* family. Past roles: Trina (*Falsettos*), Tanya (*Mamma Mia!*), Lady of the Lake (*Spamalot*), Aldonza (*Mancha*), Paulette (*Legally Blonde*), Velma (*Chicago*). She is a performing arts physical therapist at jennakantorpt.com. She thanks Ryan, family, friends, and pets. www.jennakantor.com

JARED SVOBODA (*u/s Larry Murphy*). Past credits include *Bat Out of Hell* (Vegas Residency); *Jersey Boys* and *Newsies* (The Rev); *Footloose* (NCL), fans of documentaries may recognize him as Jesus in Morgan Freeman's "Story of God." Jared is a proud graduate of NYU Tisch.

STEVEN LEVENSON (*Book*). Steven is a Tony Award-winning playwright, screenwriter, and television writer and producer. His plays include *If I Forget, Core Values, Seven Minutes In Heaven*, and *The Language of Trees*. He wrote the book for the musical, *Dear Evan Hansen*, which won six Tony Awards, including Best Book and Best Musical, as well as the Olivier Award for Best New Musical.

BENJ PASEK & JUSTIN PAUL (*Music & Lyrics*). Oscar, Grammy, and Tony Award-winning songwriters/producers Benj Pasek & Justin Paul are best known for their work on *La La Land, The Greatest Showman* and *Dear Evan Hansen*. Other recent credits include "Only Murders in the Building," *Spirited, Lyle, Lyle Crocodile, Aladdin, Trolls, "Harlem," "Dear Edward," "Smash," "The Flash,"* and *Pink: All I Know So Far*. Previous theatre credits include *Dogfight, A Christmas Story, James and the Giant Peach*, and *Edges*.

MICHAEL GREIF (*Original Director*). Five-time Tony nominated director with three new musicals this season on Broadway: *Days of Wine and Roses, The Notebook and Hell's Kitchen*. Broadway: *Rent, Next to Normal, Grey Gardens, Dear Evan Hansen, If/Then, War Paint*. Other: *Make Believe* (Second Stage); *Our Lady of Kibeho* and *Angels in America* (NY's Signature Theatre), *The Low Road, Machinal, Dogeaters, Romeo and Juliet* (The Public).

DANNY MEFFORD (*Original Choreographer*) has choreographed three Tony Award winning Best Musicals: *Kimberly Akimbo, DEH, Fun Home*. Directing: *Shrek* (national tour); *25th Annual Spelling Bee* (Kennedy Center); *Becoming Liv Ullman* (NY Fringe); *The Gorgeous Nothings, The Fitzgeralds of St. Paul* (upcoming projects). Off-Broadway highlights: *Love's Labour's Lost* (Drama Desk nomination, Best Choreography), *Miss You Like Hell, February House, Much Ado About Nothing, Good Person of Szechwan*. International: *The Sound of Music* (tour). TV: "Rise," "Dickinson," "Fleischman Is in Trouble." MFA in Acting from Brown University/Trinity Rep.

ALEX LACAMOIRE (*Music Supervisor/Orchestrator*) has won 4 Grammys, 3 Tonys, and an Emmy for his work on *Dear Evan Hansen, Hamilton, In the Heights* and FX's "Fosse/Verdon." Music director, arranger and/or orchestrator credits include: Broadway revival of *Sweeney Todd, Message in a Bottle, 9 to 5, Legally Blonde*, and *Wicked*. Film/TV credits include: Netflix's *Vivo* (composer), *In The Heights*, and *Tick, Tick... Boom!* (Executive Music Producer).

DANNY SHARRON (*Direction Restager*). He/him. Danny is a director of new plays and musicals, committed to creating work by and about the LGBTQ+ community. He is currently the US Associate Director for the Broadway revival of *Cabaret*, and previously oversaw four companies of *Dear Evan Hansen* (Broadway/London/Toronto/1st Nat'l Tour) as the show's Senior Associate Director. NYC-based. Proud SDC member. Full credits: dannyssharron.com

BEN COHN (*Associate Music Supervisor*). Broadway: Music Director for *Death Becomes Her* (upcoming), *Dear Evan Hansen, Once Upon A One More Time*. Assistant Conductor for *Wicked*. Music Director for Clay Aiken and Stephanie J. Block. Conducted *Sunset Boulevard* and *Tick, Tick... Boom!* at the Kennedy Center. Ithaca and NYU Grad. Lives In NYC with his husband and son.

WHO'S WHO IN THE COMPANY

MARK MYARS (*Direction/Choreography* Restager). Broadway Resident Director/Choreographer: *Death Becomes Her*. Broadway Associate Choreographer: *Dear Evan Hansen* (National Tour, London), *The Cher Show*, *My Fair Lady* (National Tour, London), *SpongeBob Squarepants*, *War Paint*, *If/Then* (National Tour). International Dance Supervisor: *Wicked* (National Tour, Chicago, London, Japan, Germany, Australia). Film/TV Associate Choreographer: *Isn't It Romantic*, "Schmigadoon". Mark is a Guest Musical Theater Teacher and teaches Master Classes nationwide. www.markmyars.com

DAVID KORINS (*Scenic Design*). Broadway: *The Who's Tommy*, *Here Lies Love* (Tony nom), *Hamilton* (Tony nom), *Beetlejuice* (Tony nom), *Dear Evan Hansen*, *Just For Us*, *Mrs. Doubtfire*, *War Paint* (Tony nom), *Bandstand*, *Misery*, *The Great Society*, *Motown the Musical*, *Vanya and Sonia and Masha and Spike*, *Annie*, *Bring It On*, *Godspell* and *Passing Strange*. Television: "Grease: Live!" (Emmy Award), 91st and 94th Academy Awards (Emmy nom).

PETER NIGRINI (*Projection Design*) is one of Broadway's pioneering projection designers. His work includes *Hell's Kitchen*, *The Who's Tommy*, *Here Lies Love*, *MJ*, *Ain't Too Proud*, *Beetlejuice*, *Dear Evan Hansen*, *The SpongeBob Musical*, *A Doll's House Part 2* and *Fela!*. In other venues and forms including *Ground* (Public Theater), *Lucia de Lammermoor* and *Don Giovanni* (Santa Fe Opera), *The Grace Jones Hurricane Tour*, and *Deep Blue Sea* for Bill T. Jones/Arnie Zane Dance.

EMILY REBHOLZ (*Costume Design*). Broadway: *Gutenberg! The Musical!*; *Jagged Little Pill* (Tony Award nomination); *Frankie and Johnny in the Clair de Lune*; *Getting the Band Back Together*; *Indecent*; *Oh, Hello on Broadway*; *If/Then*; *Vanya and Sonia and Masha and Spike*; *Bloody Bloody Andrew Jackson*.

Off-Broadway: Lincoln Center, Roundabout, NYTW, Public Theater, LAByrnth Theatre Company, Playwrights Horizons, Second Stage, NY City Center, among others. Opera: The Santa Fe Opera House and Opera Theater St. Louis. MFA: Yale

JAPHY WEIDEMAN (*Lighting Design*). 20 Broadway shows: *The Heart of Rock n Roll*, *SHUCKED!*, *The Piano Lesson*, *Summer 1976*, *Dear Evan Hansen*, *The Visit*, *The Nance*, *Of Mice and Men*, *Airline Highway*, *Lobby Hero*, *Bright Star*, *Charlie and the Chocolate Factory*. West End: *Dear Evan Hansen* (Noel Coward), *A Nice Fish* (Harold Pinter Theatre), and *Blackbird* (Albery Theatre). Production and Lighting Designer for Liz Phair's *Exile in Guyville* national tour, and for Hasan Minhaj's *The King's Jester* at Radio City and National Tour. 5 Tony Nominations for Lighting Design.

NEVIN STEINBERG (*Sound Design*). Broadway: *The Notebook*, *Sweeney Todd* 2023 Revival (Tony Award), *TINA — The Tina Turner Musical* (Tony nomination), *Hadestown* (Tony award), *Hamilton*, *Dear Evan Hansen*, *Freestyle Love Supreme*, *The Cher Show*, *Bandstand*, *Bright Star*, *It Shoulda Been You*, *Mothers and Sons*, *Rodgers+Hammerstein's Cinderella* (Tony nomination), *The Performers*. Over thirty other Broadway productions with Acme Sound Partners and five additional Tony nominations: *The Gershwins' Porgy and Bess*, *Bengal Tiger at the Baghdad Zoo*, *Fences*, *Hair*, *In The Heights*.

MURNANE CASTING (*Casting*) is a first-class office in New York City specializing in casting theatre, film, and television projects nationwide. We focus on developing new works and collaborating with emerging creators. Our mission is to curate exceptional ensembles of artists in a relaxed and imaginative casting environment. Learn more at MurnaneCasting.com.

WHO'S WHO IN THE COMPANY

KELSEY VENTER (*Assistant Director/Assistant Choreographer*). Venter was a member of the First National Tour of *Dear Evan Hansen*, serving as the tour's Dance Captain and as the cover for Heidi Hansen and Cynthia Murphy. As a performer, she has worked at theaters across the country including the Old Globe, the American Conservatory Theater, Guthrie Theatre and the Kennedy Center. Venter earned her BA in Theater from SDSU and her MFA from the American Conservatory Theater. kelseyventer.com

TALITHA FEHR (*Music Coordinator*) has worked on over 75 national and international productions and tours since 2005. Highlights include: *Sister Act*, *Mamma Mia!*, *School of Rock*, *Come Fly Away*, *Phantom of the Opera*, *Love Never Dies*, and *Priscilla Queen of the Desert* as well as the 2010 Olympic Ceremonies in Vancouver. She dedicates her work on *Dear Evan Hansen* to the memory of her mentor, Sam Lutfiyya.

RANDY COHEN (*Keyboard Programmer*). Cohen Keyboards has programmed or provided keyboard tech services for over 100 Broadway shows including *Hamilton*, *Book of Mormon*, *Dear Evan Hansen*, *In The Heights*, and *Kinky Boots*. TV: "Sesame Street," "Electric Company." Thanks to Sam, Tim, and Nick.

MICHAEL HOPEWELL (*Music Director*). Off-Broadway: *Once We Lived Here* (US Premiere); Tours: *My Fair Lady*, *The Phantom of the Opera*, *White Christmas*, *Dirty Dancing*. Regional: Tuacahn Amphitheater, John W. Engeman Theater, Gateway Playhouse; Recordings: Stage Stars Records (*Urinetown*, *The Wizard of Oz*, *How To Succeed...*). Love to my family. Endless thanks to Ben, Talitha, and DAR. For Mom, who taught me how.

ANNA KLEVIT (*Production Stage Manager*) is elated to be part of *Dear Evan Hansen!* National Tours: *Annie*, *My Fair Lady*, *Rudolph*. Selected regional credits: *What We Talk About...* (Old Globe); *Into the Woods*, *Matilda*, *Fireflies*, (South Coast Repertory); *Memphis*, *Once on This Island* (Moonlight Amphitheatre). This one's for Mom and Dad.

KATY GENTRY (*Assistant Stage Manager*). National tours: *Annie*. Selected regional credits: *Theater of the Mind*; *Rattlesnake Kate*; *Quixote Nuevo* (Denver Center); *Sound of Music*, *Sweeney Todd* (Asolo Rep); *Tiger Style* (Olney Theatre Center). Katy holds a BFA from the University of Central Florida.

AARON MARTIN (*Company Manager*) is from Birmingham, AL, and excited to be on the *DEH* team! National Tours (ACM): *Annie*, *Anastasia*. Regional: Maine State Music Theatre (ACM); Florida Repertory Theatre (CM); Berkshire Theatre Group, Weston Playhouse (Intern). Thanks to the Crossroads Team, Katy, Anna, and Patrick. Love to family and friends.

LINDSAY KAPLAN (*Assistant Company Manager*) is thrilled to be on the road with *DEH!* Previous tour: *CATS!* Lindsay is a recent graduate from The Theater School at DePaul University. She would like to thank friends and family for always supporting her! IG @lindsaykaplan

GREGG DAMANTI (*Production Manager*). A 24-year theater veteran, Gregg started as a Production Stage Manager for Busch Entertainment, and later became the Production Manager for *Blue Man Group* in NYC. National tour credits include the first national of *On Your Feet!*, *CATS*, the first national of Lincoln Center's *My Fair Lady*, *Pretty Woman*, and now *Dear Evan Hansen*. "Thank you to Jen and Ripley who I miss dearly while on the road, and love coming home to them both."

WHO'S WHO IN THE COMPANY

ANDREW TERLIZZI (*General Manager*) comes to Crossroads Live after a 17-year touring career, 10 of which were with TROIKA Entertainment. Current GM credits: *Dear Evan Hansen*, *Pretty Woman: The Musical*. Select other credits: Jimmy Buffett's *Escape to Margaritaville*, *Bodyguard the Musical*, and *Priscilla Queen of the Desert*. He holds a B.F.A. from the University of North Carolina School of the Arts.

THE BOOKING GROUP (*Tour Direction*) has represented 28 Tony Award® winning Best Musicals and Plays. Current tours include *The Book of Mormon*, *Chicago*, *Come From Away*, *Dear Evan Hansen*, *Hadestown*, *Hamilton*, *Mamma Mia!*, *Mean Girls*, *MJ The Musical*, *Mrs. Doubtfire*, *Parade*, *Pretty Woman*, *SLX*, *Some Like It Hot*, *TINA — The Tina Turner Musical*, and *The Wiz*.

BOND THEATRICAL (*Tour Marketing & Publicity*) is an independently-owned theatrical booking, marketing and publicity company representing award-winning Broadway shows and live entertainment properties. BOND connects artists and audiences by forming strategic, authentic and profitable partnerships between producers and presenters across North America. For a complete list of current projects, please visit BondTheatrical.com

NEURO TOUR (*Physical Therapy*). Carolyn Lawson PT, founder and CEO of NEURO TOUR & Neurosport (Physical Therapy), Global leaders in entertainment and performing arts medicine. We are honored to be part of this amazing touring company *Dear Evan Hansen*. NEURO TOUR, Keeping performers happy, healthy & on stage.

MUSIC THEATRE INTERNATIONAL (MTI) is one of the world's leading theatrical licensing agencies, granting theatres from around the world the rights to perform the greatest selection of musicals from Broadway and beyond. Founded in 1952 by composer Frank Loesser and orchestrator Don Walker, MTI is a driving force in advancing musical

theatre as a vibrant and engaging art form. MTI works directly with the composers, lyricists and book writers of these musicals to provide official scripts, musical materials and dynamic theatrical resources to over 70,000 professional, community and school theatres in the US and in over 60 countries worldwide. MTI is particularly dedicated to educational theatre and has created special collections to meet the needs of various types of performers and audiences. MTI's Broadway Junior™ shows are 30- and 60-minute musicals for performance by elementary and middle school-aged performers, while MTI's School Editions are musicals annotated for performance by high school students. MTI maintains its global headquarters in New York City with additional offices in London (MTI Europe) and Melbourne (MTI Australasia).

JAYNA NEAGLE (*Executive Producer*). For Cirque du Soleil: *'Twas the Night Before*, *Paramour* (Broadway, Hamburg); *The Wiz* (NBC production). For BASE Entertainment: *Arrabal* (Buenos Aires, Toronto), *Jersey Boys* (Johannesburg, Asian tour), *Priscilla Queen of the Desert* (São Paulo), *The Lion King* (Singapore), Jerry Mitchell's *Peepshow* (Las Vegas), *Wayne Brady: Making Sh%@ Up* (Las Vegas).

CROSSROADS LIVE (*Producer & Tour Management*) brings together some of the world's top producers of live entertainment, now all under one banner. With offices in London, New York, Washington, D.C., Sydney, and Melbourne—our global platform ensures the best-loved titles from Broadway and the West End can be embraced by audiences around the world. Crossroads Live North America, under the leadership of Angela Rowles, is an innovative, full-service theatrical production company delivering the Broadway experience to audiences in North America and beyond. Our 2024-2025 Season: *Annie*; *Dear Evan Hansen*; *Dr. Seuss' How The Grinch Stole Christmas! The Musical*; *Pretty Woman*; *The Phantom of the Opera* (Asia); *TINA — The Tina Turner Musical*.

STAFF FOR DEAR EVAN HANSEN

**FOR CROSSROADS LIVE NORTH AMERICA
EXECUTIVE PRODUCER**

Jayna Neagle

GENERAL MANAGER

Andrew Terlizzi

PRODUCTION MANAGER

Gregg Damanti

Assistant Production Manager.....Suzayn MacKenzie-Roy

COMPANY MANAGER

Aaron Martin

Assistant Company Manager Lindsay Kaplan

TOUR MARKETING & PUBLICITY

BOND THEATRICAL

bondtheatrical.com

DJ Martin Temah Higgins Mollie Mann

Marc Viscardi Wendy Roberts

Tony Joy Elisabeth Reyes

TOUR DIRECTION

THE BOOKING GROUP

Meredith Blair

Rich Rundle, Brian Brooks

Jonathan Pearson and Maryruth Grabez

thebookinggroup.com

CASTING

MURNANE CASTING

Chad Eric Murnane, CSA

Amber Snead, CSA

Nathaniel Riccio

PRODUCTION STAGE MANAGER..... Anna Klevit

Assistant Stage Manager Katy Gentz

Dance Captain..... Monica Blume

Associate Scenic Designer..... Richie Oulette & Javier Ameijeiras

Production Carpenter..... G.E. Simmons Falk

Costume Coordinator..... Hayley King

Hair & Makeup Coordinators Liz Printz, Nina Job

Assistant Costume Coordinator..... Daniella Pineda

Production Stitcher Aislinn Smith, Mia Mooney

Associate Lighting Designer..... Ken Wills

Moving Light Programmer Jeremy Goldenberg

Production Electrician Joel Bulthuis

Associate Sound Designer Mackenzie Ellis

Assistant Sound Designer..... Jamie Davis

Production Audio..... Alec Harris

Associate Projection Designer..... Kate Ducey

Projection/Video Programmer..... Sean Hooper

Video Animator..... Zoey Crow

Production Video..... Lorenzo Lagola, Jordan Brown,

Tristan Van Tine

Assistant Keyboard Programmer Sam Starobin, Tim Crook,

Nick Schenkel

Guitar Programmer..... Dillon Kondor

Virtual Voices Produced by Todd Hart/Vegas Voices

Virtual Voices Mixed by..... Ian Kagey

Production Assistant Alex Magallanes

HEAD CARPENTER Shane Lowry

Flyman Matthew Lamers

Deck Carpenter Alyssa Cargill

Head Props Ani Inman

Head Electrician Chandler Gray

Assistant Electrician - Video..... Jake Gomez

Assistant Electrician - FOH Aaron Kurland

Head Audio Mitchell Rieth

Assistant Audio Meg Schelling

Wardrobe Supervisor Melina Hernandez

Crew Swing..... Andi Voigt

Physical Therapy Company NEURO TOUR Physical Therapy, Inc.

Insurance EPIC Insurance Brokers

Social Media..... Think Tank Marketing

Social Media Captains Jenna Kantor, Jessie Tossey

Tour Marketing & Publicity Office..... BOND Theatrical/
Nilesa Alexander, Tia Altinay, Jenny Bates, Kolten Bell,
Melissa Cohen, Jesse Daniels, Steph Kelleher, Harrison Mootoo,
Scotland Newton, Laura Rizzo, Madison St. Amour,
Linda Stewart, Jacob Stuckelman, Hannah Wallace
Production Photography..... Evan Zimmerman for MurphyMade
Merchandise Provider Creative Goods
Merchandise Manager Gena Byrd

CROSSROADS LIVE NORTH AMERICA

Chief Executive Officer Angela Nowles

Executive Producer Jayna Neagle

Executive Producer Kori Prior

Vice President of People Operations Charisse Fontes

Vice President of Finance Brian Jacob

Vice President of Marketing..... Michael Yuen-Killick

Senior General Manager Andrew Terlizzi

Director of Production Heather Chockley

Director of Booking and Engagements..... Tyler Soltis

Production Manager Gregg Damanti

General Manager..... Deana Marie Kirsch

Engagement Manager Barrett Newman

Warehouse Manager..... Corey Howard

Associate General Manager..... Melanie Cahill

Associate General Manager..... Emily Miu

Assistant Production Manager..... Suzayn MacKenzie-Roy

Assistant Production Manager Drew Neitzey

Production Accounting Manager Sheila Lewis

Production Accountant..... Travis Huebel

Staff Accountant Electra Walker

Executive Assistant to the CEO Alissa Klusky

Assistant Warehouse Manager..... Joshua Cookson

Learn more about Crossroads Live North America and our team:

www.xroadslive.com

CREDITS

Scenery by TTS Studios. Lighting equipment from PRG. Sound equipment by MASQUE. Video equipment by 4Wall. Rigging by Phoenix Lighting and Rigging. Rehearsal Studio: Pearl Studios, NYC. Trucking by JANCO. Touring Company Lobby Signage by Express Signs in Frederick, MD.

SPECIAL THANKS

Dear Evan Hansen rehearsed at Pearl Studios in New York, NY. Technical Rehearsals and Previews held at the Tobin Center in San Antonio, TX.

Dear Evan Hansen is proud to collaborate with:

Crisis Text Line. In crisis? Text HELLO to 741741 for free, 24/7 crisis support.

The Jed Foundation (JED), a nonprofit that exists to protect emotional health for our nation's teens and young adults. Jedfoundation.org

@DearEvanHansen
www.dehtour.com



Backstage Employees are represented by the International Alliance of Theatrical Stage Employees (or I.A.T.S.E.).



The Director and Choreographer are members of the STAGE DIRECTORS AND CHOREOGRAPHERS SOCIETY, a national theatrical labor union.



United Scenic Artists • Local USA 829
of the I.A.T.S.E. represents
the Designers & Scenic Artists
for the American Theatre

WARNING

The photographing or sound recording of any performance or the possession of any device for such photographing or sound recording inside this theatre, without the written permission of the management, is prohibited by law. Violators may be punished by ejection and violations may render the offender liable for money damages.

DEAR

EVAN

HANSEN

THE TONY AWARD-WINNING BEST MUSICAL