



MESA ARTS CENTER
Mesa Contemporary Arts Museum

44TH ANNUAL CONTEMPORARY CRAFTS

FEBRUARY 10 – APRIL 23, 2023

Memory Bradley (Mesa, AZ) Bleached (detail), 2022, Wool, silk, 27 1/2 x 38 x 2 inches.



ARTISTS

- Susan Allred (Tempe, AZ)
- Richard Ansaldi (Tucson, AZ)
- Katy Bergman Cassell (Greenville, SC)
- Gretchen A. Boyer (Fountain Hills, AZ)
- Memory Bradley (Mesa, AZ)
- Alexandra Catalina (Tucson, AZ)
- Carol Durham (San Rafael, CA)
- Carol Eckert (Tempe, AZ)
- J. Paul Fennell (Scottsdale, AZ)
- Abigail Galvin (Phoenix, AZ)
- Christine Golden, (Flagstaff, AZ)
- David Gootnick (Washington, DC)
- Zach Gordon (Tucson, AZ)
- Casey Hanrahan (Phoenix, AZ)
- Marla Hattabaugh (Scottsdale, AZ)
- Steve Hilton (Wichita Falls, TX)
- Holland Houdek (Rochester, NY)
- Dean Johnson (Santa Fe, NM)
- Heather Kaplan (Las Cruces, NM)
- Brad Karlberg (Tempe, AZ)
- David Leighly (Cottage Grove, MN)
- Connie Lippert (Seneca, SC)
- Jo Van Loo (Phoenix, AZ)
- Ana M. Lopez (Fort Worth, TX)
- William McKinney (Wichita Falls, TX)
- Jessica Mohl (Crawfordsville, IN)
- Kerianne Quick (Lemon Grove, CA)
- Michael F. Rohde (Westlake Village, CA)
- Ali Schorman (Chandler, AZ)
- Lynn Smith (Phoenix, AZ)
- Kelvonnah Stidhum (Phoenix, AZ)
- Genie Swanstrom (Mesa, AZ)
- Kaori Takamura (Carefree, AZ)
- Peeta Tinay (Orinda, CA)
- Jess Tolbert (El Paso, TX)
- Regina Vorgang (Ventura, CA)
- Joan Waters (Chandler, AZ)
- Suzanne Wolfe (Honolulu, HI)
- Danielle Wood (Tempe, AZ)

JUROR'S STATEMENT

There is a distinct language to working with one's hands that the term "craft" encapsulates perfectly. Fluctuating easily between noun and verb, "craft" may be loosely defined by materials and processes. On the noun side, craft usually utilizes materials like glass, clay, wood, paper, fiber, and metal. On the verb side, these materials are manipulated by processes like frameworking, weaving, casting, slab building, or carving. The term roguishly slides into its adjective form in "crafty," whose definition can be earnest, as a description of artfulness and skill, or coy, to describe a sly cleverness.

Craft is indeed a cunning medium. It can be functional or stubbornly useless. It can be relegated to the world of "women's work" or subversively deployed to critique that designation. It can swoop into fine art museums or stay firmly planted in gift economies. It is more accessible to a broader range of people, while maintaining deep richness in its artisanal histories and mastery of form.

The works selected for the *44th Annual Contemporary Crafts* exhibition explore each of these elements: material knowledge, craftsmanship, and clever storytelling.

A reverence and reference to nature appeared in many works—whether highlighting the inherent beauty of natural materials or making sharp commentary on our changing climate. *Flooding* by Zach Gordon, for example, cleverly uses a fountain form atop a vessel to depict rising water levels and their potentially devastating effects on coastal cities. Similarly, Memory Bradley's felted fiber work *Bleached* depicts a skeletal coral reef, the once chromatic sea floor now bleached of its natural neon tones.

A second, related theme of "home," either as a physical place or a more ephemeral feeling seemed to materialize. We are all residents on this Earth, so the entanglement of home and our environment seems fitting. *Blue House with Agave* by Lynn Smith, depicting a house with pitched roof all slightly askew, is adorned with the small details that transform a house into a home. On the other hand, Kerianne Quick's *214 Hartle* and *All the Places You Never Lived* offer house keys as negative space imprints in sterling silver, suggesting loss, change, or simply moving on.

It has been a privilege to jury the *44th Annual Contemporary Crafts* exhibition for the Mesa Contemporary Arts Museum. All of the submissions deserve honors, and the task of narrowing the list was quite difficult. My congratulations to all of the artists who submitted. Thank you for inspiring us to learn the language and lexicon of working with one's hands.

Ariel Zaccheo, Curator

Museum of Craft and Design in San Francisco, California

SUSAN ALLRED

(Tempe, AZ)

How Does Your Armor Grow?, 2022,

Fiber, mixed media,

25 x 19 x 13 inches.





RICHARD ANSALDI

(Tucson, AZ)
An Indian Cowboy in the Rodeo,
2022, Clay, horsehair, rope,
11 x 9 x 8 inches.

*Juror's Award Winner

RICHARD ANSALDI

(Tucson, AZ)
Pueblo Deco Mudman with Insight,
2022, Clay, mirrors,
8 x 11 x 11 inches.



KATIE BERGMAN CASSELL

(Greenville, SC)

Disseminate, 2018,

Enamel, copper, sterling silver,
18 x 9 x 4 inches.

KATIE BERGMAN CASSELL

(Greenville, SC)

Nestleate, 2019,

Enamel, copper, sterling silver,
20 x 2 x 2 inches.





GRETCHEN A. BOYER

(Fountain Hills, AZ)

Global Edges, 2022,
Clay, 7 x 9 x 9 inches.

MEMORY BRADLEY

(Mesa, AZ)

Bleached, 2022,
Wool, silk, 27 x 28 x 2 inches.



ALEXANDRA CATALINA

(Tucson, AZ)

Accessory Sculpture 2: For the Queen, 2022,

Ceramic, watercolor, brass,
copper with vitreous enamel,
rubies, tourmaline, garnets,
glass beads, 9¼ x 8 x 2½ inches.





CAROL DURHAM

(San Rafael, CA)

Weaving Memories, 2018,
Hog-gut, 5ft x 12 x 2 inches.

CAROL ECKERT

(Tucson, AZ)

The Fall of Icarus, 2020,
Cotton, linen, wire, encaustic,
38 x 79 x 6 inches.



J. PAUL FENNELL

(Scottsdale, AZ)
Acacia Waves, 2021,
Wood turned Acacia,
10 x 7 x 7 inches.

J. PAUL FENNELL

(Scottsdale, AZ)
Transitions, 2019,
Wood turned Acacia,
8½ x 6¼ x 6¼ inches.





ABIGAIL GALVIN

(Phoenix, AZ)

*Collective Protective Equipment
(CPE), 2021,*

Tooth floss, hard candy,
53 x 21 inches.

CHRISTINE GOLDEN

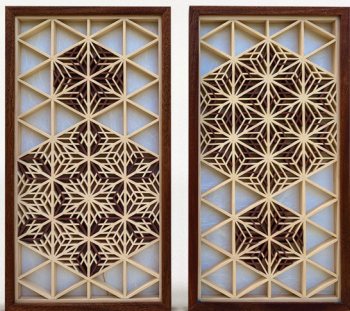
(Flagstaff, AZ)

Embedded, 2019,
Clay, sand, gold leaf,
33 x 12 x 8 inches.

DAVID GOOTNICK

(Washington, DC)

Equilibrium, 2021,
Alaskan Yellow Cedar,
Redheart, mulberry paper,
15 x 7 1/2 x 2 inches.





ZACH GORDON

(Tucson, AZ)
Flooding, 2022,
Ceramic, 12 x 14 x 14 inches.

ZACH GORDON

(Tucson, AZ)
Insiders and Outsiders, 2022,
Ceramic, metal, 16 x 9 x 9 inches.

*Juror's Choice Award Winner



CASEY HANRAHAN

(Phoenix, AZ)

Sculptural Light 12, 2022,

Porcelain, LED,

16 x 18 x 8 inches.

CASEY HANRAHAN

(Phoenix, AZ)

Sculptural Light 15, 2022,

Porcelain, LED,

7 x 9 x 4 inches.





MARLA HATTA BAUGH

(Scottsdale, AZ)

Resurface, 2021,

Fiber, 32 x 33 inches.

STEVE HILTON

(Wichita Falls, TX)

Untitled Teapot #1,038, 2022,
Stoneware, 6½ x 6½ x 7 inches.

STEVE HILTON

(Wichita Falls, TX)

Untitled Teapot #1,042, 2022,
Stoneware, 6½ x 6½ x 6½ inches.



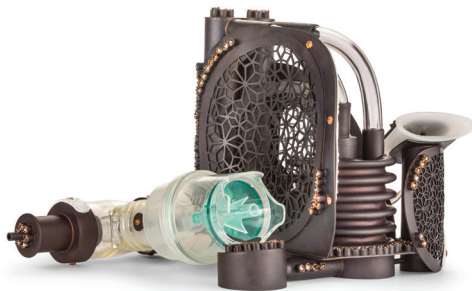


HOLLAND HOUDEK

(Rochester, NY)

Spinal Axis Deviation (Scoliosis Implant), 2017,

Hand-fabricated copper, raised, pierced Swarovski crystals (2,306), bead blasted patina, 6 x 13½ x 8½ inches.



HOLLAND HOUDEK

(Rochester, NY)

Device 57A (Nebulizer), 2018,

Hand-fabricated copper, pierced, Nebulizer, plastic tube, Swarovski crystals (134), etched powder coat, patina, 4¼ x 7 x 5 inches.

DEAN JOHNSON

(Santa Fe, NM)

Pierced Orange Bowl #5, 2022,
Wood, 10 x 10 x 10 inches.

HEATHER KAPLAN

(Las Cruces, NM)

Empanada Emerald City, 2019,
Ceramic, 12 x 24 x 12 inches.





BRAD KARLBERG

(Tempe, AZ)
*Nakashima Style Sycamore
Side Table, 2021,*
Sycamore and Jatoba wood,
20½ x 28½ x 17 inches.

DAVID LEIGHLY

(Cottage Grove, MN)
Paper Doll, 2022,
Wood, 69 x 22 x 14 inches.



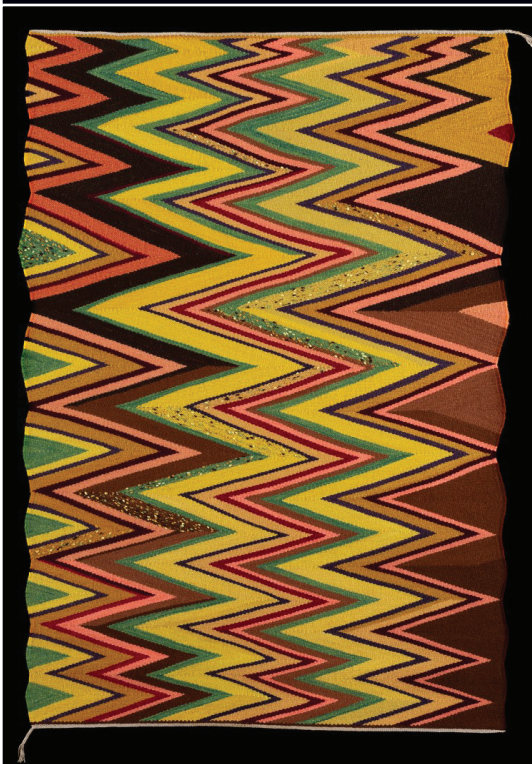
CONNIE LIPPERT

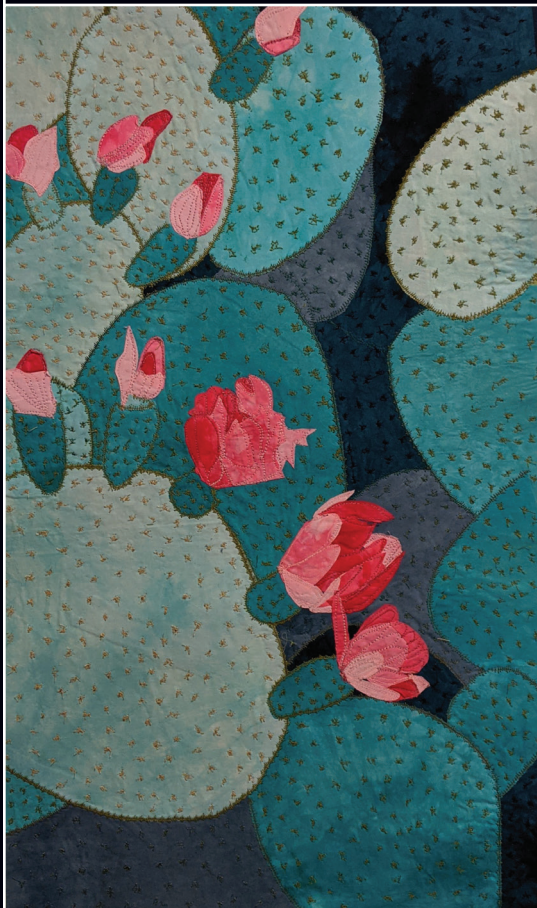
(Seneca, SC)

Frack, 2019,

Fiber, natural dyes,

58 x 40 inches.





JO VAN LOO
(Phoenix, AZ)
Flor de Nopal, 2022,
Fabric, 27 x 16 inches.

ANA M. LOPEZ

(Fort Worth, TX)

Grow, Build, Climb, Fly, 2021,
Copper, brass, enamel, casein,
18 x 18 x 9 inches.

WILLIAM MCKINNEY

(Wichita Falls, TX)

Filter Rock #7, 2021,
Woodfired stoneware, slip,
17 x 10 x 16½ inches.





JESSICA MOHL
(Crawfordsville, IN)
Broken, 2019,
Copper, silver, 33½ x 15 inches.



JESSICA MOHL
(Crawfordsville, IN)
Perihelion, 2018,
Silver labradorite, 6 x 6 x 1¼ inches.

KERIANNE QUICK

(Lemon Grove, CA)

214 Hartle, 2019,

Sterling silver, 4½ x 1¾ x ¼ inches.

*Juror's Award Winner

KERIANNE QUICK

(Lemon Grove, CA)

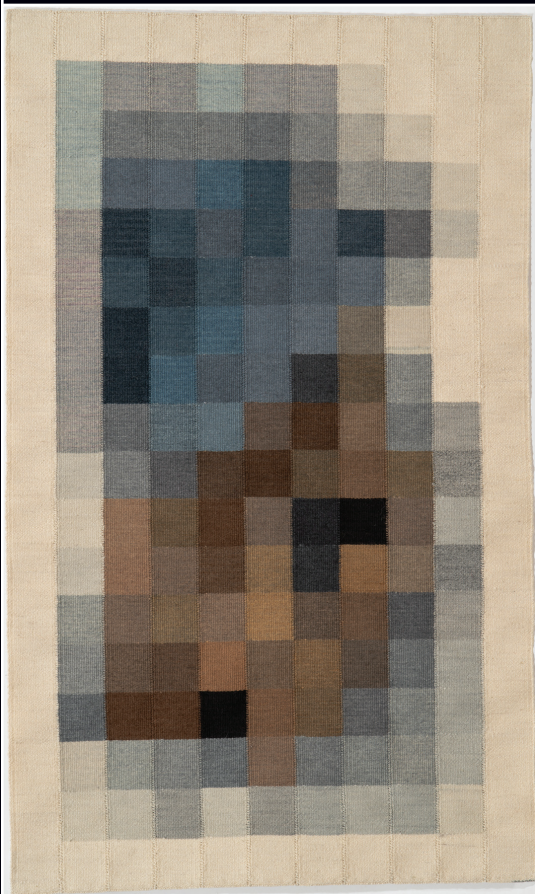
All the Places You Never Lived

(detail), 2017-2022,

Fine silver, sterling silver,

11 x 11 x 2 inches.





MICHAEL F. ROHDE
(Westlake Village, CA)
re: Cascade, 2021,
Handwoven tapestry, wool,
natural dyes 54 x 32½ x ½ inches.

ALI SCHORMAN

(Chandler, AZ)

from left to right:

Light Blue Bottle, Green Bottle,

Pink Bottle, 2021,

Porcelain, sizes vary.





LYNN SMITH

(Phoenix, AZ)

Blue House with Agave, 2022,

Clay, underglaze,

9 x 4½ x 5 inches.

KELVONNAH STIDHUM

(Phoenix, AZ)

Wash Day Brooch, 2021,
Copper, vitreous glass, yarn,
2½ x 1½ x 3 inches.

KELVONNAH STIDHUM

(Phoenix, AZ)

Industrial Glamour, 2019,
Concrete, steel, powder coat,
glitter, 17½ x 8¾ x 1½ inches.





GENIE SWANSTROM

(Mesa, AZ)

Tranquility, 2022,

Stoneware and copper,
17 x 14 x 11 inches.

KAORI TAKAMURA

(Carefree, AZ)

Jewels 0821, 2021,

Laser cut acrylic,
36 x 34 x 4 inches.



PEETA TINAY

(Orinda, CA)

Vessel 3, 2021,

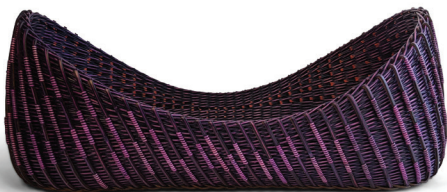
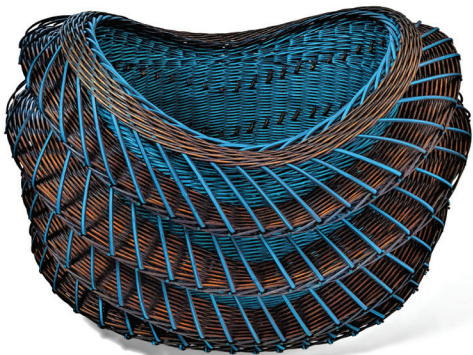
Round reed and cane,
0.59 x 22.04 x 1.18 inches.

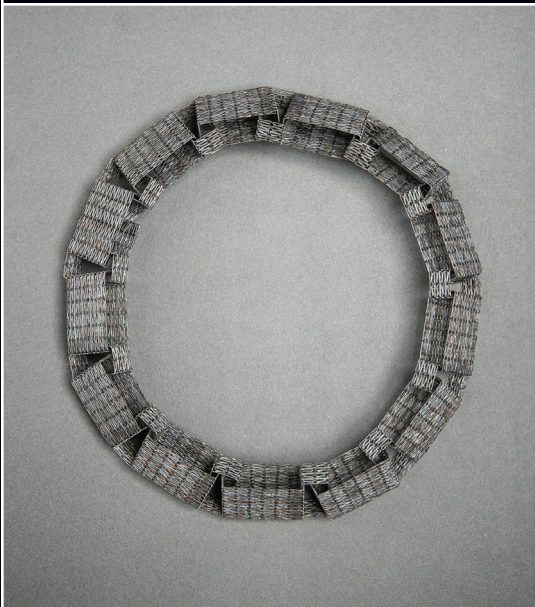
PEETA TINAY

(Orinda, CA)

Vessel 4, 2022,

Round reed and cane,
12½ x 30 x 16 inches.





JESS TOLBERT

(El Paso, TX)

Greater Than Series (Collar), 2019,

Fused steel staples,

0.59 x 22.04 x 1.18 inches.

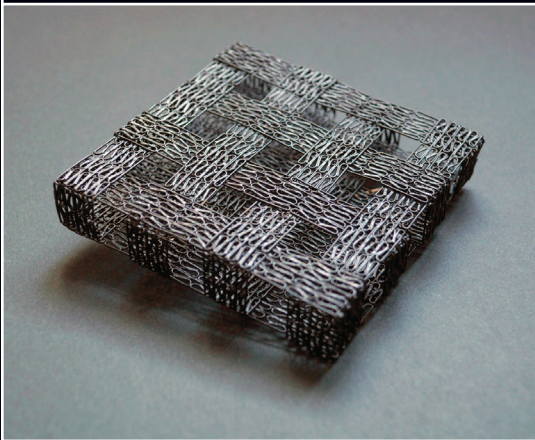
JESS TOLBERT

(El Paso, TX)

Woven (Brooch), 2021,

Fused steel staples, steel, 14k

gold, 0.78 x 3.94 x 3.94 inches.



REGINA VORGANG

(Ventura, CA)

Changes 8 Table Runner, 2021,

Wool fiber, 45¼ x 13½ inches.





JOAN WATERS

(Tempe, AZ)

Garden Shadows No. 1, 2022,

Hand plasma-cut steel with

patinas, clear powder coat,

51 x 16 x 3 inches.

SUZANNE WOLFE

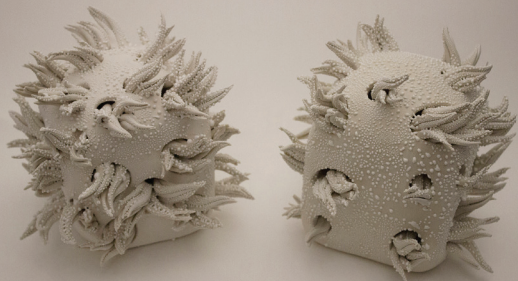
(Honolulu, HI)

Crane and Flower Breast Cup, 2022,

Ceramic, 2½ x 4½ x 4½ inches

Photograph courtesy of Brad Goda.





DANIELLE WOOD

(Tempe, AZ)
Particulate, 2020,
Glazed ceramic,
9½ x 6½ x 6½ inches.

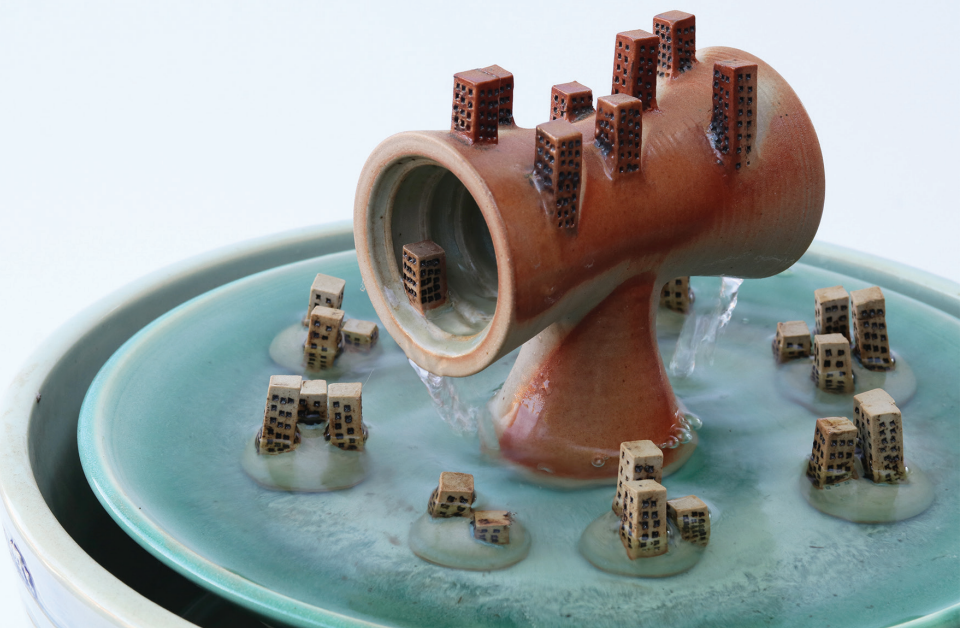
*Juror's Award Winner

DANIELLE WOOD

(Tempe, AZ)
Acetabularia, 2021,
Glazed ceramic,
12½ x 11½ x 11½ inches.



Zach Gordon (Tucson, AZ) *Flooding* (detail), 2022, Ceramic, 12 x 14 x 14 inches.
*Juror's Choice Award Winner Solo show in Dr. Ruth Tan Lim Project Room, 2024.



HOURS OF OPERATION

Mondays: Closed
Tues - Sat: 10am-5pm
Sun: Noon-5pm

ADMISSION: FREE



MESA ARTS CENTER
Mesa Contemporary Arts Museum

One East Main Street | PO Box 1466
Mesa, Arizona 85211-1466

Mail Code 7710

480-644-6560 | MesaArtsCenter.com

ARIZONA
COMMISSION
ON THE ARTS



All Docent led tours are postponed
until further notice.
Please call 480-644-6561 for
more information.