



MESA ARTS CENTER  
Mesa Contemporary Arts Museum

42<sup>ND</sup> ANNUAL

# CONTEMPORARY CRAFTS

SPRING 2021 CATALOG



Sarah Perkins (Springfield, MO), Cardinal II, 2020.  
Copper, silver, enamel, 6 x 4 1/2 x 4 1/2 inches.

Rameen Ahmed (Tucson, AZ)  
 Judy Bales (Fairfield, IA)  
 Deborah Corsini (Pacifica, CA)  
 Carol Durham (San Rafael, CA)  
 J. Paul Fennell (Scottsdale, AZ)  
 Donna Forst (Phoenix, AZ)  
 Irwin Freeman (Philadelphia, PA)  
 Donald Friedlich (Madison, WI)  
 Suzanne Hesh (Tucson, AZ)  
 Polly Jacobs Giacchina (La Mesa, CA)  
 Stephen Johnson (Mesa, AZ)  
 Dean Johnson (Santa Fe, NM)  
 Ana M. Lopez (Fort Worth, TX)  
 Nancy Middlebrook (Philadelphia, PA)  
 Cynthia Miller (Tucson, AZ)  
 Jessica Mohl (Crawfordsville, IN)  
 Laurie Nessel (Tempe, AZ)  
 Farraday Newsome (Mesa, AZ)  
 Margy O'Brien (Albuquerque, NM)  
 Sarah Perkins (Springfield, MO)  
 Colleen Quigley (Tucson, AZ)  
 Jeff Reich (Mesa, AZ)  
 Michael F. Rohde (Westlake Village, CA)  
 Shelley Ann Rothgeb (Phoenix, AZ)  
 David Schnuckel (Rochester, NY)  
 Rowen Schussheim-Anderson (Davenport, IA)  
 Beth Shook (Gilbert, AZ)  
 Jim S. Smoote II (Chicago, IL)  
 Christy Wittmer (Phoenix, AZ)  
 Warren Woodson (Mesa, AZ)

## JUROR'S STATEMENT

Attracting/Compelling      Biding/Enticing      Entrancing/Sustaining  
 An exhibition juror is privileged to be introduced to wondrous works from makers perhaps previously unknown to her. She may have a very intense response to the images. And/or she may experience echoes of familiarity with certain new forms and ideas, with certain objects and functions. It is a potentially rich, expectant opportunity from the out-of-the-ordinary pool. There is always the possibility to recognize an artist's visual vocabulary structurally, the material exploration or the personal narrative. Multiply these prospects and understand what a potential, ever-exciting, open-ended, visual promise/adventure may await, especially for the long-seasoned juror/curator.

Diversity/Focus      Domesticity/ Design and Style      History/Experimentation  
 Invite/Share      Energy/Passion      Manipulation/Touch  
 Thought provoking      Exciting/Serene      Utility/Beauty

ALL of this is possible in clay, enamel, fibers, found and recycled materials, glass, metals, mixed media, paper, wood. ALL of these can be present by blowing, building, calligraphy, ceramics, crochet, digital manipulation, dyeing, felting, forging, forming, fusing, glazing, mosaic making, quilting, repurposing, sculpting, shaping, stitching, turning, weaving, et al. ALL of this can await us- the makers and the audience, alike. There are so many right answers- both the known and the unanticipated. As we grow as viewers our experience multiplies because we absorb, process and appreciate the new, unforeseen, juxtaposed 'possibilities.' We build our vocabulary as viewers, parallel to the ever-inquisitive maker. Thank you to the creative individuals who make this real.

*Ruthless*- a bold mixed metal collar of unexpected solid and linear elements; *Bulbous*, *Rain Collector* and *Germinator*- a trio of voluptuous hand built clay forms marked by natural references; *Molten Ocean*- a whirling tumultuous swirl of color and mood; *Valle Grande*- a delicate handmade artist 'sketch'book; *Persephone's Necklace*- a silver vine-like stem with vegetation to encircle the wearer's neck; *Argillite*- an earthy new relic of clay and bone; *Pixilation*- an intense portrait of juxtaposed wood elements; *Jewel Box*- a bold fashion portrait quilt; *Yellow Vase with Snakes, Oranges, and Moonsnails*- a vessel of dimensional fruits watched over by a serpent; *Norway 5*- a serene, geometric cotton weaving; *Extinction* and *BLM*- bold color glass make portraits of political heroes; *Yellow #1* and *Red #2*- elegant and vibrant turned wood vessels; *Fire Season*- "hot" abstract landscape weaving; *Panemixed* media objects juxtapose personal meaning; *Ft Worth Gas Meter* and *Ft Worth Trash Chute*- important wearable industrial narrative neckpieces; *Louver Suite: Houston* and *Phoenix*- abstracted industrial landscape panels.

*Lumina*- sleek, translucent glass brooches in 3 series; *Cardinal II*- a sumptuous red enamel lidded vessel; *Les Sept Mers* and *Shoal*- carved wood forms celebrating beauty of material and technical prowess; *Night Agave* and *Storm*- complex ceramic plaques alluding to land and climate; *Mysterious*- a large enigmatic woven tapestry; *Fragile Connection*- a construction of delicate porcelain repetitive elements becomes a strong edifice; *Cessions*- an elegant collation of slumped glass vessels attracts wonder; *Red Triptych*, *Never Leave Me* and *Los Descondidos*- narratives in handsewn fibers and threads wander poetically; *Boro*- an ethereal collaged image from hog gut and paper thread; *Days Spent*- an outstretched hand beckons; *As A Berry*, *Green Trap* and *Yellow 'N Squat*- made complex patterned paper forms; *Clinging To The Line*- a knitted line of botanical elements; *Just Three Words*- a composite book of puzzle-like invitation; *Twisted*- wrapped flexible elements become an open collar; *Moss*- a mixed media swathe of land treasure; *Light Reflections*- woven and stitched, a painterly fiber view.

The 42nd Annual Contemporary Crafts Juried Exhibition: personal celebrations of choice, exploration, media, process, narrative and joy:

Imagination      Individuality      Experimentation      Mastery  
 This juror strives to discover and identify tactile works with resonance and 'memory'- those from artists who seduce us to keep exploring their ongoing ideas, sequential objects and evolving visual and tactile tales.

Thank you all,  
 Gail M. Brown | Independent Curator of Contemporary Craft, Oakland, CA

**RAMEEN AHMED**  
(Tucson, AZ)  
*Ruthless 01*, 2020,  
Mixed media metal,  
12 x 10 x ¾ inches.



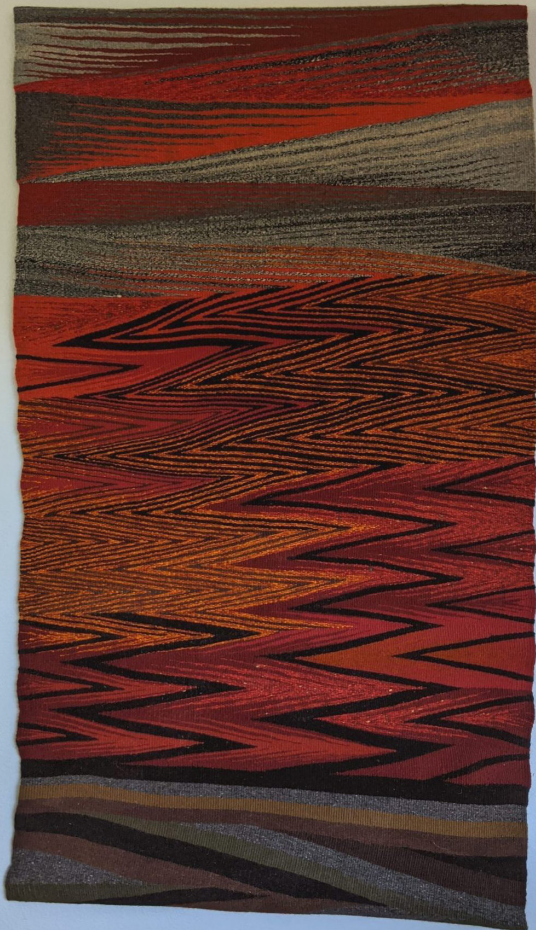
**JUDY BALES**  
(Fairfield, IA)  
*Twisted*, 2018,  
Fabric, wire, paint,  
5 x 18 x 12 inches.  
Photo courtesy of  
Blacksheep Photography  
of Omaha.



**DEBORAH CORSINI**

(Pacifica, CA)

*Fire Season*, 2020,  
Fiber, 60 x 35 inches.



**CAROL DURHAM**

(San Rafael, CA)

*Boro*, 2017,  
Hog-gut, paper, thread,  
66 x 37 x 1 inches.





**J. Paul Fennell**  
(Scottsdale, AZ)  
*Les Sept Mers*, 2020,  
Wood, 7 x 7 inches.



**J. Paul Fennell**  
(Scottsdale, AZ)  
*Shoal*, 2020,  
Wood, 8 x 6 inches.



**DONNA FORST**  
(Phoenix, AZ)  
*Argillite Study 20*, 2020,  
Reclaimed clay and  
desert bone,  
9 x 11 x 8 inches.

**IRWIN FREEMAN**

(Philadelphia, PA)  
*The Copper Age (Ore,  
Verdigris, Tailings, Snow),*  
2020, Crocheted thread,  
11 x 7 x 2 inches.

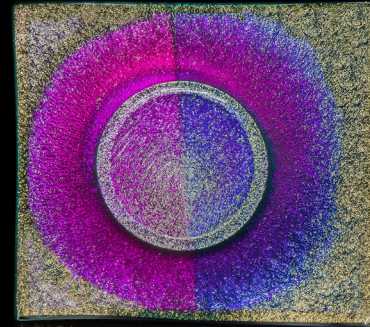
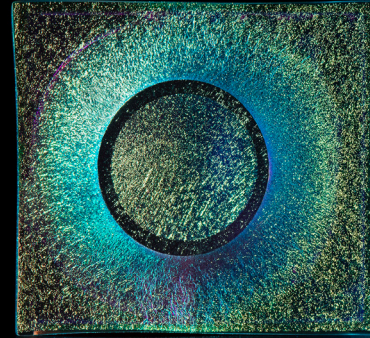
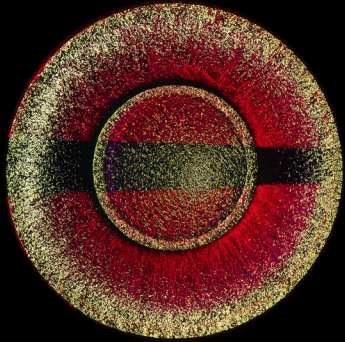
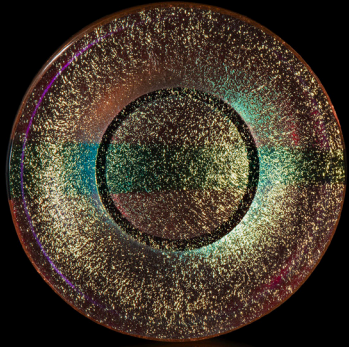


**DONALD FRIEDLICH**

(Madison, WI)  
*Lumina Series Brooch 2*  
(rod-3 views),  
2018, Borosilicate glass,  
custom dichroic glass,  
14k gold,  
4 1/4 x 1 x 7/8 inches.

\*Juror's Award Winner

**DONALD FRIEDLICH**  
(Madison, WI)  
*Lumina Series Brooch*  
(circles-2 views), 2020,  
Dichroic glass, Borosilicate  
glass, 14k gold,  
2 5/8 x 2 5/8 x 1/2 inches.



**DONALD FRIEDLICH**  
(Madison, WI)  
*Lumina Series Brooch*  
(squares-2 views),  
2020, Dichroic glass,  
Borosilicate glass, 14k gold,  
2 3/4 x 2 3/8 x 1/2 inches.



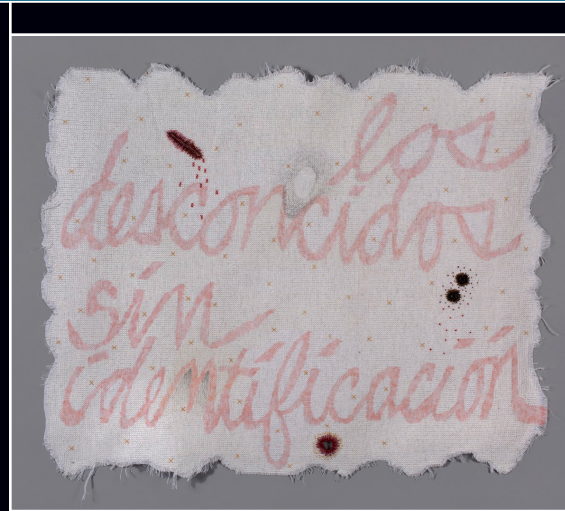
**SUZANNE HESH**  
(Tucson, AZ)  
*Red Triptych*, 2020,  
Textile,  
24 x 45 x ½ inches.



**SUZANNE HESH**  
(Tucson, AZ)  
*Never Leave Me*, 2018,  
Textile,  
36 x 45 x 1 inches.

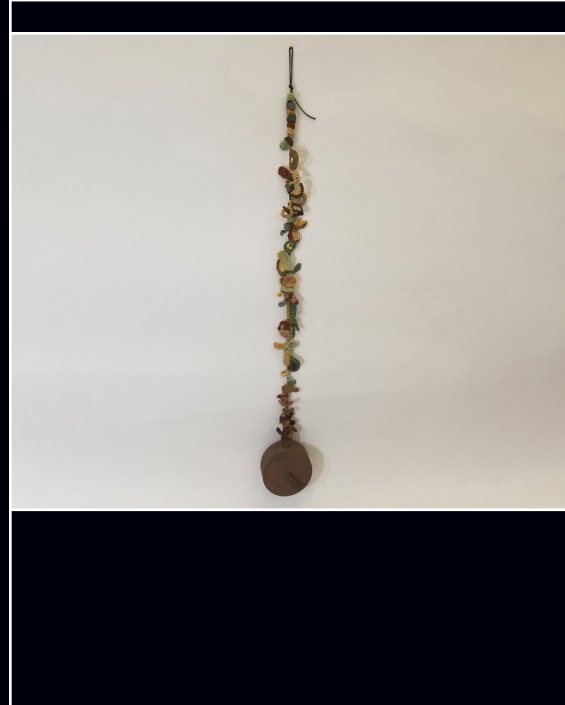


\* Juror's Award Winner



**SUZANNE HESH**  
(Tucson, AZ)  
*Los Desconocidos/Sin  
Identificación*, 2016,  
Textile, 36 x 45 x ½ inches.

**POLLY JACOBS  
GIACCHINA**  
(La Mesa, CA)  
*Clinging to the Line*, 2020,  
Fiber, 23 x 3 x 2 inches.



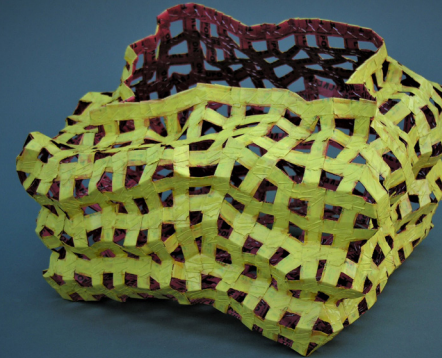
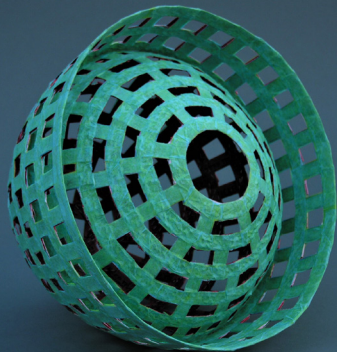
**STEPHEN JOHNSON**

(Mesa, AZ)  
*As a Berry*, 2020,  
Paper, mixed media,  
12 x 12 x 9 inches.



**STEPHEN JOHNSON**

(Mesa, AZ)  
*Green Trap*, 2020,  
Paper, mixed media,  
12 x 12 x 9 inches.



**STEPHEN JOHNSON**

(Mesa, AZ)  
*Yellow N' Squat*, 2020,  
Paper, mixed media,  
8½ x 12½ x 12½ inches.

**DEAN JOHNSON**  
(Santa Fe, NM)  
*Yellow #1*, 2020,  
Turned Aspen wood,  
8 x 8½ x 8½ inches.



**DEAN JOHNSON**  
(Santa Fe, NM)  
*Orange #2*, 2020,  
Turned Aspen wood,  
11½ x 10 x 10 inches.

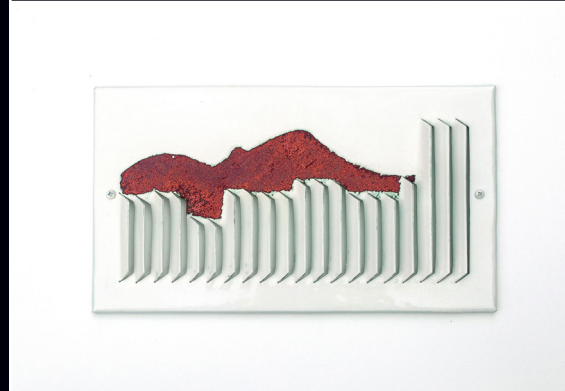
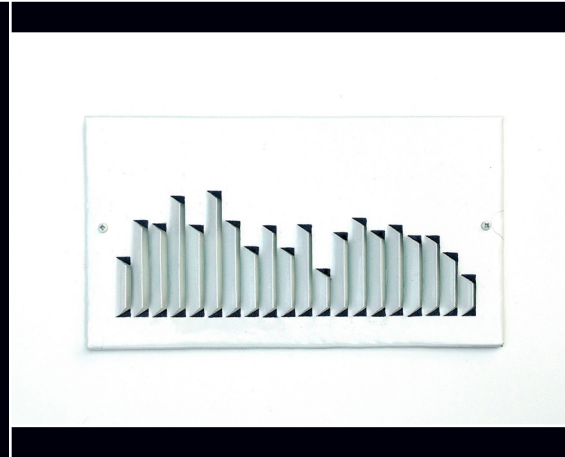




**ANA M. LOPEZ**  
(Fort Worth, TX)  
*Fort Worth Gas Meter,*  
2017, Sterling silver,  
12 x 6½ x 2 inches.

**ANA M. LOPEZ**  
(Fort Worth, TX)  
*Fort Worth Trash Chute,*  
2019, Sterling silver,  
10½ x 5¼ x 1½ inches.

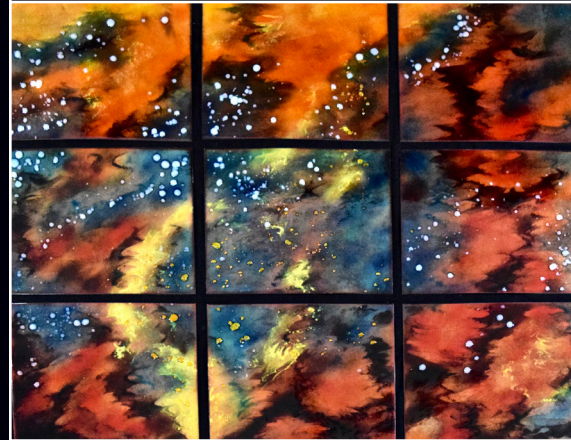
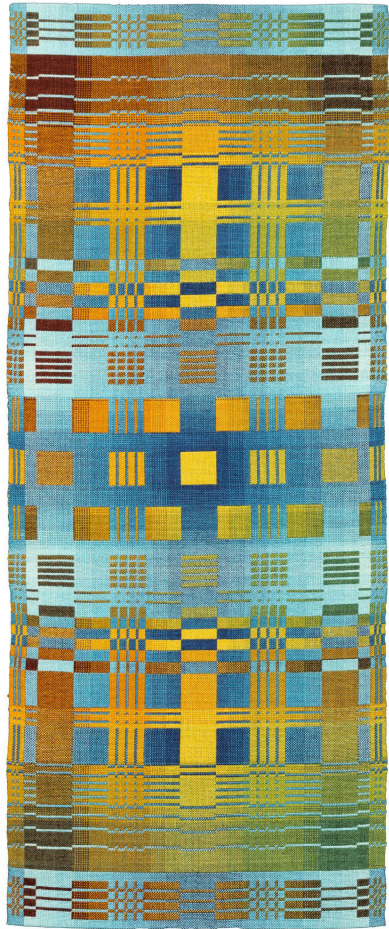
\* Juror's Choice and  
Award Winner



**ANA M. LOPEZ**  
(Fort Worth, TX)  
*Louder Suite: Houston,*  
2018, Copper, enamel,  
8 x 14 x ½ inches

**ANA M. LOPEZ**  
(Fort Worth, TX)  
*Louder Suite: Phoenix,*  
2020, Vitreous enamel  
on copper,  
8 x 14 x ½ inches.

**NANCY MIDDLEBROOK**  
(Philadelphia, PA)  
*Norway #5*, 2020,  
Woven hand-dyed cotton,  
23 x 9 x 1 inches.



**CYNTHIA MILLER**  
(Tucson, AZ)  
*Molten Ocean*, 2017,  
Enamel, 34 x 40 inches.

**JESSICA MOHL**  
(Crawfordsville, IN)  
*Persephone's Necklace*,  
2019, Sterling silver,  
sunstones, rutilated quartz,  
8 x 12 x 2½ inches.



**LAURIE NESSEL**

(Tempe, AZ)  
*Extinction #27:*  
*Eco-warrior/martyr:*  
*Chico Mendes, 2020,*  
Glass, 2 3/4 x 2 x 1 inches.



**LAURIE NESSEL**

(Tempe, AZ)  
*BLM #5: MLK, 2020,*  
Glass,  
2 7/8 x 1 3/4 x 1 inches.



**FARRADAY NEWSOME**

(Mesa, AZ)  
*Yellow Vase with Snake,*  
*Oranges, and Moonsnails,*  
2019, Glazed terra cotta,  
11 1/2 x 18 1/4 x 12 1/2 inches.

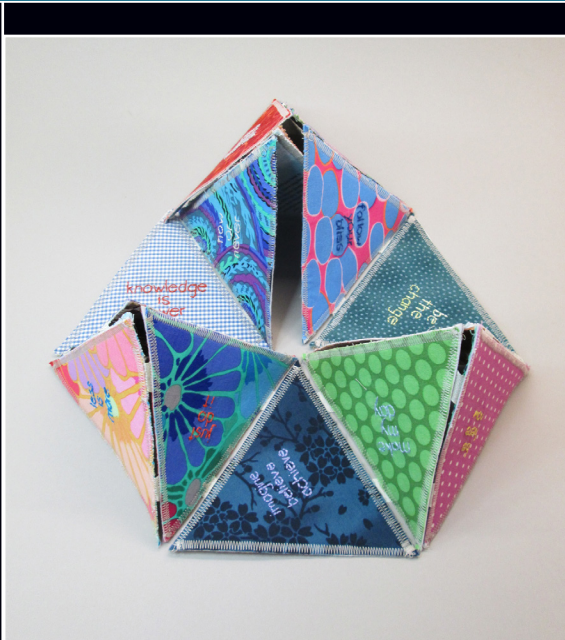


**MARGY O'BRIEN**

(Albuquerque, NM)  
*Just 3 Words*, 2019,  
Fiber, artist's book,  
14 x 7 x 4 inches.

**MARGY O'BRIEN**

(Albuquerque, NM)  
*Valle Grande: Sketchbook*,  
2019, Fiber artist's book,  
6 x 42 inches extended.



**SARAH PERKINS**

(Springfield, MO)  
*Cardinal II*, 2020,  
Copper, silver, enamel  
and turquoise,  
6 x 4¼ x 4¼ inches.

**COLLEEN QUIGLEY**  
(Tucson, AZ)  
*Bulbosus carnosus*, 2020,  
Hand built glazed ceramic,  
15 x 13 x 13 inches.

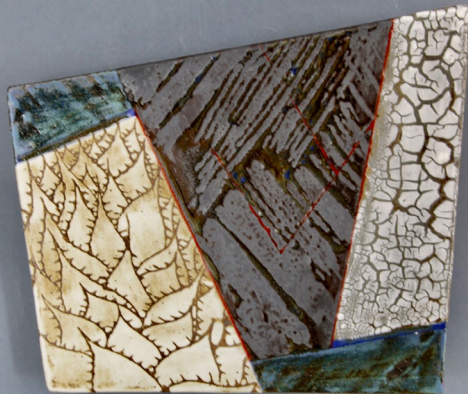
**COLLEEN QUIGLEY**  
(Tucson, AZ)  
*Rain Collector*, 2020,  
Hand built glazed ceramic,  
19 x 12 x 12 inches.



**COLLEEN QUIGLEY**  
(Tucson, AZ)  
*Germination*, 2020,  
Hand built glazed ceramic,  
16 x 9 x 9 inches.

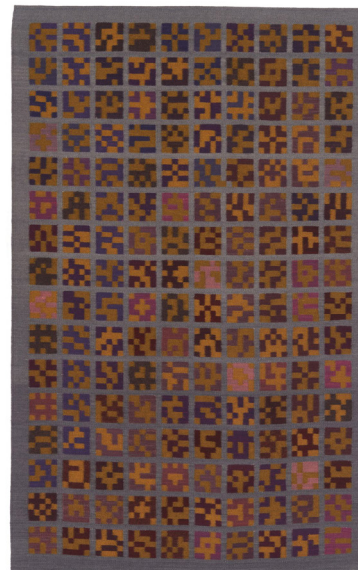
**JEFF REICH**

(Mesa, AZ)  
*Agave Night*, 2018,  
Stoneware,  
12 x 12 x 3 inches.



**JEFF REICH**

(Mesa, AZ)  
*Storm*, 2018,  
Stoneware,  
13½ x 11 x 3 inches.



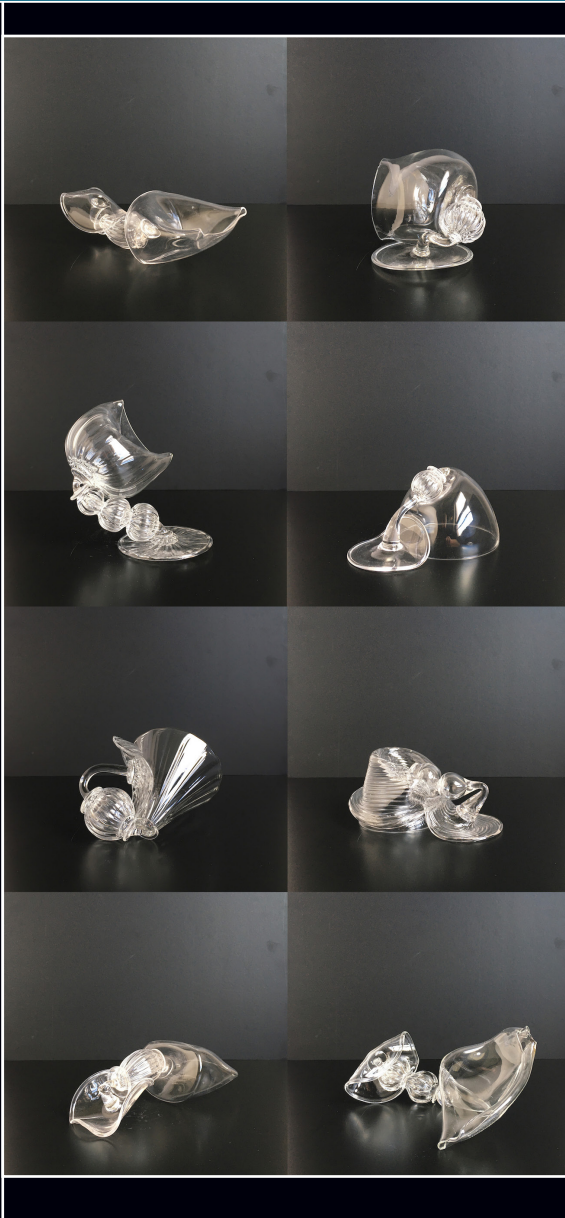
**MICHAEL F. ROHDE**  
(Westlake Village, CA)  
*Mysterious*, 2020,  
Handwoven tapestry, wool,  
camel, natural dyes,  
77 x 48½ inches.

**SHELLEY ANN  
ROTHGEB**  
(Phoenix, AZ)  
*Moss*, 2020,  
Mixed media, fiber,  
30 x 22 inches.





**DAVID SCHNUCKEL**  
(Rochester, NY)  
*Cessions*, 2020,  
Blown glass, time,  
temperature,  
4 x 4 x 4 inches each.



**ROWEN SCHUSSHEIM  
-ANDERSON**  
(Davenport, IA)  
*Light Reflections*, 2019,  
Fiber, woven tapestry,  
21 x 14 inches.

**BETH SHOOK**  
(Gilbert, AZ)  
*Days Spent Unaware  
of the Stars*, 2019,  
Clay, wood, found objects,  
foil leaf,  
31¼ x 31¼ inches.



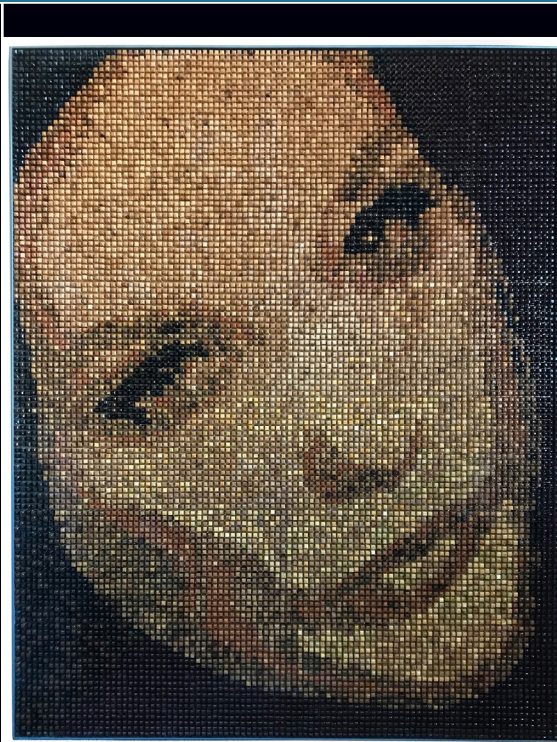
**JIM S. SMOOTE II**  
(Chicago, IL)  
*Jewel Box*, 2020,  
Quilted textile,  
58 x 49 x ½ inches.





**CHRISTY WITTMER**

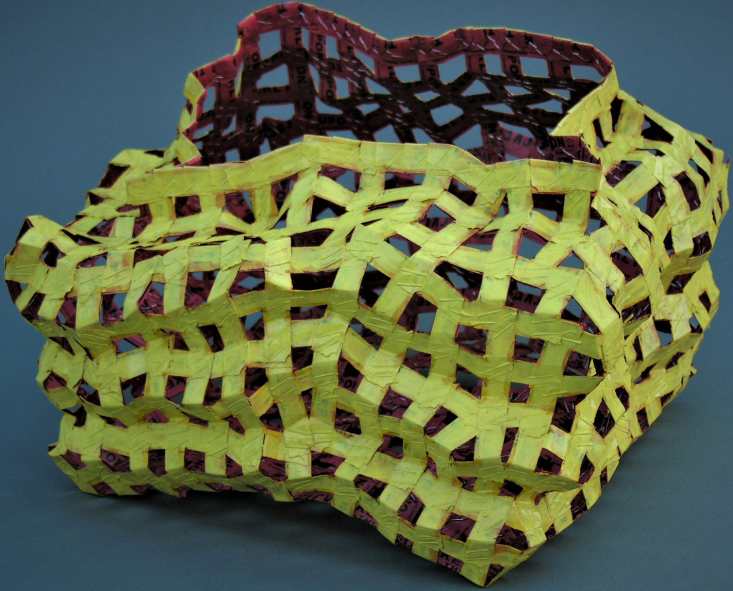
(Phoenix, AZ)  
*Fragile Connection*, 2020,  
Porcelain, wood, glazed  
soft brick,  
50 x 11½ x 11½ inches.



**WARREN WOODSON**

(Mesa, AZ)  
*Pixelation*, 2020,  
Wood, 60 x 48 x 2 inches.





Stephen Johnson (Mesa, AZ), *Yellow N' Squat*, 2020, Paper, mixed media, 8 ½ x 12 ½ x 12 ½ inches.



**MESA ARTS CENTER**  
Mesa Contemporary Arts Museum

One East Main Street | PO Box 1466  
Mesa, Arizona 85211-1466

Mail Code 7710

480-644-6560 | [MesaArtsCenter.com](http://MesaArtsCenter.com)

### HOURS OF OPERATION

Mondays: Closed

Tues - Sat: 10am-5pm

Sun: Noon-5pm

**ADMISSION: FREE**

ARIZONA  
COMMISSION  
ON THE ARTS



All Docent led tours all tours are postponed until further notice. Please call 480-644-6561 for more information.