



Piper Repertory Theater Technical Information

Mesa Arts Center

3/3/2020

Mesa Arts Center
Piper Repertory Theater Technical Information Packet
1 East Main Street, Mesa, AZ 85201

Table of Contents

General Information 4

 Technical Services: 4

 Programming: 4

 Box Office:..... 4

 Rental Contact:..... 4

 Area Hotels:..... 4

Management..... 5

 Production Office: 5

 Green Room: 5

 Policies: 5

Load-In Area..... 5

 Load-In Access to Stage:..... 5

 Directions: 5

Carpentry 6

 Seating:..... 6

 Stage Dimensions:..... 6

 Stage Floor 6

 Stage Plot:.....7

 House Draperies (Soft Goods):..... 8

 Line Set Data: 8

 House Line Set Plot:..... 9

 Support Areas: 10

 Non Use Areas:..... 10

Lighting..... 11

 Power: 11

 Control: 11

Mesa Arts Center
Piper Repertory Theater Technical Information Packet
1 East Main Street, Mesa, AZ 85201

Dimmers:..... 11

Circuits: 11

Circuit Locations:..... 12

Equipment Inventory: 12

House Lighting Plot Description..... 13

Audio 14

 Power: 14

 Control Location:..... 14

 Hearing Assist System: 14

 Paging System: 14

 Production Communication: 14

 Equipment Inventory: 14

Video 17

 Projector: 17

 Projection Screen: 17

 Video Equipment: 17

Props 18

 Orchestra Pit 18

 Music:..... 18

 Platforms:..... 18

 Dance Floor: 18

 Lecterns:..... 18

Wardrobe Area: 19

 Dressing Rooms:.....19

 Musician Warm Up Room/Multipurpose Room:.....19

Mesa Arts Center
Piper Repertory Theater Technical Information Packet
1 East Main Street, Mesa, AZ 85201

General Information

Technical Services:

Director of Production
Robby Elliott
P: (480) 644-6597
E: Robby.Elliott@mesaartscenter.com

Production Supervisor /Primary Advancing Contact
Ashley Keen
P: (480) 644-6617
E: Ashley.keen@mesaartscenter.com

Technical Director
Troy Buckey
P: (480) 644-6592
E: Troy.Buckey@mesaartscenter.com

Programming:

Director of Theater and Operations
Randy Vogel
P: (480) 644-6603
E: Randall.vogel@mesaartscenter.com

Rental Contact:

Kim Forbes
P: (480) 644-6580
E: Kimberly.Forbes@mesaartscenter.com

Box Office:

Andrew Douglas
P: (480) 644-6507
E: Andrew.Douglas@mesaartscenter.com

Area Hotels:

Marriott Mesa
200 North Centennial Way
Mesa, AZ 85201
P: (480) 898-8300

Comfort Inn and Suites
651 East Main Street
Mesa, AZ 85201
P: (480) 621-6375

Best Western Mezona Inn
250 West Main Street
Mesa, AZ 85201
P: (480) 834-9233

Holiday Inn
1600 S Country Club Drive
Mesa, AZ 85210
P: (480) 863 - 4780

Mesa Arts Center
Piper Repertory Theater Technical Information Packet
1 East Main Street, Mesa, AZ 85201

Management

Production Office:

Location: Upstage hallway of Piper Theater
Hard wired Internet access via Cat5e Ethernet cable available, shared wireless available.
Copier available in the Piper Loading dock area

Green Room:

Up Stage Hallway of Piper Theater

Policies:

- Lobby typically opens 1 hour prior to curtain with house opening 30 minutes prior to curtain.
- The Fire Curtain must not be obstructed in any manner which could prevent its complete contact with the stage floor when deployed.
- All scenery drops and fabric must be flame proofed. Random testing of articles will occur.
- All wood must be flame-proofed (fire-treated).
- All doors in the facility are fire rated and must not be obstructed in any way to prevent their closure.

Load-In Area

Load-In Access to Stage:

- Two loading docks at stage level.
- Dock can accommodate 1 53' trailer (tractors have to detach), and 1 box truck simultaneously
- Driver must remain to move truck if necessary.
- Loading dock doors 10'W x 10'H
- Interior stage door is 8'11" W x 12' H
- Cargo must be ramped off or lifted off trucks. Loading Doors are at street level.
- There is no forklift on site
- Trucks and trailers must be moved to south surface lot
- Post-show storage is NOT available at the Mesa Arts Center. All items must leave at load-out. The Mesa Arts Center is not responsible for any items left behind.

Directions:

1. From Phoenix take Loop 202 East.
2. Exit Country Club Drive and head south to Main St.
3. Turn Left (East) on Main St. and travel a half mile until you come to Surrine/Centennial Way
4. Turn Right (South) on Surrine/Centennial Way
5. Take your first right into the service drive behind the Sunrise Bank. Follow the drive as it curves to the left. Park on the left, Performer entrance is on the right at the glass doors.

Mesa Arts Center
Piper Repertory Theater Technical Information Packet
 1 East Main Street, Mesa, AZ 85201

Carpentry

Seating:

House Capacity – 558 with orchestra lift seated

Orchestra Section	Balcony
322 Fixed (Orchestra Pit – 33 seats)	222 Fixed
6 Wheelchair	4 Wheelchair
	4 Loose Chairs

Stage Dimensions:

Proscenium width: 39' 5"

Proscenium height: 23' 3"

SL Locking Rail to SR wall: 90' 7.5"

Stage Left wing: 28' 10"

Stage Left wall to fly rail pipe end: 20' 6"

Stage Left wall to Stage Left Side Tab: 16' 6"

Stage Right wing 22' 6"

Stage Right Locking Rail to fly rail pipe end: 14'

Stage Right Locking Rail to Stage Right Tab: 10'

There are pin rail galleries stage right and stage left at 21' above stage level and are 8' wide.

Plaster line to back wall: 36'

Plaster line to last line set (50): 35'

Control Room to Plaster Line: 58' 6"

House Mix Position to Plaster Line: 48'

Follow spot Booth to Center Stage: 88'

Gridiron: 56'

Plaster Line to Orchestra pit edge: 5' 6"

Orchestra Pit (33'L x 12'W radius design) 290sq. ft

Variable depth to 7' below stage level.

Static load capacity: 43,500 lbs.

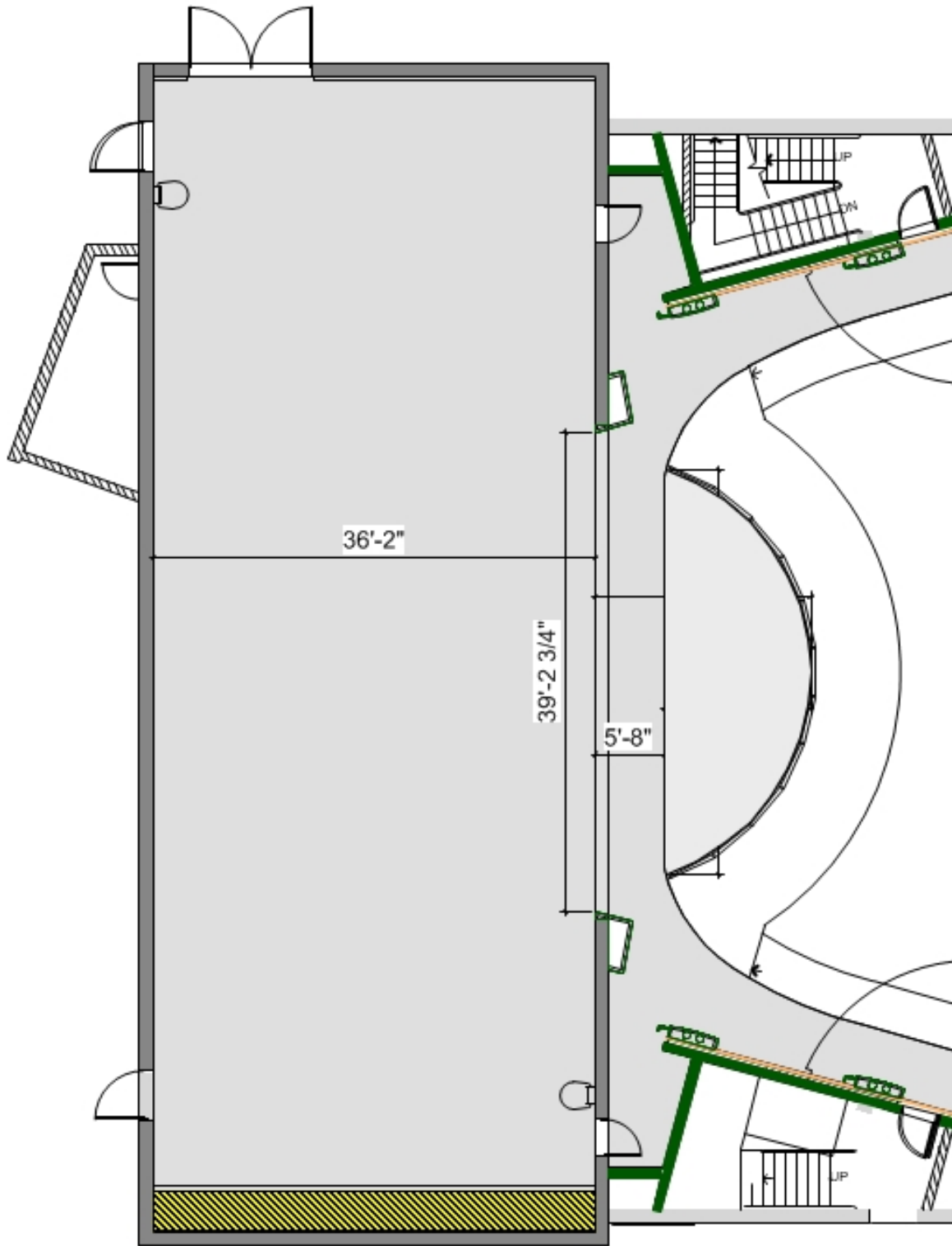
Lifting load capacity: 14,500 lbs.

Stage level runway (5' wide) and extends the entire length of the house chamber left and right with access from the stage.

Stage Floor

- 1" Maple Hardwood, painted black
- Lagging into MAC floors is allowed, but all hardware must be Grade 5 or higher. Client will be responsible for all costs incurred to the MAC in the repair of the holes.
- No Traps are available

Mesa Arts Center
Piper Repertory Theater Technical Information Packet
1 East Main Street, Mesa, AZ 85201



Mesa Arts Center
Piper Repertory Theater Technical Information Packet
 1 East Main Street, Mesa, AZ 85201

House Draperies (Goods):

Draperies	Quantity	Size	Fullness	Fabric	Lining	Color	Notes
Main Border	1	56' x 15'	75% Sewn In	25 oz Velour	Black Ranger	Green	Nap Up
Main Drape	2	28' x 28'	75% Sewn In	25 oz Velour	Black Ranger	Green	Nap Up
Border	4	56' x 12'	None	25 oz Velour	None	Black	Nap Down
Leg	10	12' 9" x 28'	None	25 oz Velour	None	Black	Nap Down
DS Traveler	2	42' x 28'	50% Tied In	25 oz Velour	None	Black	Nap Down
Mid Traveler	2	42' x 28'	50% Tied In	25 oz Velour	None	Black	Nap Down
Black Scrim	1	56' x 30'	None	Sharktooth	None	Black	
Full Stage Black	1						
Cyclorama	1	56' x 30'	None	Lino	None	White	Seamless
Tabs	8	6' 9" x 30'	None	25 oz Velour	None	Black	Nap Down

Line Set Data:

Working Height of Battens:

- High Trim: 53' 5"
- Low Trim: 3' 6"

Battens: 50 Battens, 56' Long, Schedule 40, 4 house electric pipes are truss battens

Type: Single Purchase

Arbor Capacity: 1680 Pounds per arbor

Available Weight: Located USR, Mid-Rail and Loading Rail

Loading Galleries: 2 Located Stage Right at 28' and 43' above stage floor

Pin Rail: Located Stage Right at 3' 6"

Side Ladders: There are 5 sets of ladders that are on tracks on either side of stage. 30" from center line. These ladders do fly.

Side Tab Curtains: There are 8 side curtains, 4 on each side. 32' from center line. These side tabs do fly.

Mesa Arts Center
Piper Repertory Theater Technical Information Packet
 1 East Main Street, Mesa, AZ 85201

LUD 8-24-18	FROM	House Hang
LINE SET	PROSC	DESCRIPTION
MT	1'	MAIN TEASER
MD	2'	MAIN DRAPE (TRAVELER)
3	3'	1ST BORDER
4	3' 6"	1ST LEGS
5	4'	GP
7	5'	1ST ELECTRIC
9	6'	GP
10	6' 6"	GP
11	7'6"	GP
12	8' 2"	GP
SRT	8' 10"	STAGE RIGHT TAB
13	9' 6"	DS TRAVELER / 2ND BORDER (CANNOT TRANSFER)
14	10' 2"	2ND LEGS
SLL	10' 10"	STAGE LEFT LADDERS
15	11' 6"	2ND ELECTRIC
17	12' 10"	GP
18	13' 6"	GP
19	14' 6"	PROJECTION SCREEN
20	15' 2"	GP
21	15' 10 "	GP
22	16' 6"	3RD BORDER
23	17' 2"	3RD LEGS
24	17' 10"	GP
26	19' 2"	3RD ELECTRIC
SRL	19' 10"	STAGE RIGHT LADDERS
27	20' 6"	GP
28	21' 6"	MID TRAVELER
29	22' 2"	GP
30	22' 10"	GP
31	23' 6"	GP
32	24' 2"	4TH BORDER
33	24' 10"	4TH LEGS
34	25' 6"	GP
SLT	26' 2"	STAGE LEFT TAB
35	26' 10"	4TH ELECTRIC
37	28' 6"	GP
38	29' 0"	5TH BORDER
39	29' 6"	5TH LEGS
40	30' 0"	SCRIM
42	31' 0"	5TH ELECTRIC
44	32' 0"	GP
45	32' 6"	GP
46	33' 0"	FULL STAGE BLACK
47	33' 6"	GP
48	34' 0"	GP
49	34' 6"	GP
50	35' 0"	CYCLORAMA

Mesa Arts Center
Piper Repertory Theater Technical Information Packet
1 East Main Street, Mesa, AZ 85201

Support Areas:

Crossover:

There is no dedicated crossover. Closest crossover is the Upstage Hallway with Access to Stage Right and Stage Left

Access:

From Front of House: Hallway Stage Right (House Left) to Upstage Hallway

From Dressing Rooms: Dressing Rooms are located in the Upstage Hallway and on the 2nd floor, accessible via stairway in the Upstage Hallway

Storage:

There is no dedicated storage space for events. Events may store equipment in loading dock and in purple painted areas in the Ikeda hallway during their stay. Storage is not available before or after the show. All items must leave at load-out.

Non-Use Areas

- As per the Fire Marshall, floor areas blocked off in red floor paint must never be obstructed.

Designated areas which are painted green in the backstage hallway are approved as storage areas.

Mesa Arts Center
 Piper Repertory Theater Technical Information Packet
 1 East Main Street, Mesa, AZ 85201

Lighting

Power:

Quantity	Voltage	Phase	Amperage	Location	Connection
1	120/208	3 Phase	400a	Up Stage Right	Cam
2	120/208	3 Phase	200a	Up Stage Right	Cam
2	120/208	3 Phase	400a	Stage Left Wall	Cam
2	120/208	3 Phase	200a	Stage Left Wall	Cam
1	120/208	3 Phase	200a	Stage Left Pin Rail	Cam
1	120/208	3 Phase	200a	Gridiron Stage Right	Cam
1	120/208	3 Phase	200a	Proscenium Catwalk	Cam

Control:

- ETCNET 2 Throughout Venue
- ETC Ion + 1 10x10 and 1 20x20 fader wing as primary console
- ETC Ion + 1 10x1 Fader Wing as backup
- ETC Net 3 Radio Focus Remote

Dimmers:

- 286 ETC Sensor Dimmers, 2.4kW dimmer
- 2 ETC Sensor Dimmers, 6kw dimmer

Circuits:

- 286 – 2.4kw circuits. Fixed Positions on Stage Right and Stage Left catwalks with Socopex multicable connections.

Mesa Arts Center
Piper Repertory Theater Technical Information Packet
 1 East Main Street, Mesa, AZ 85201

Circuit Locations:

Location	Dimmers	House Plot Location
1 st AP	80 – 91	1 st AP
2 nd AP	62 – 79	62-67 HR Box Boom, 75-79 HL Box Boom
3 rd AP	32 – 61	3 rd AP
4 th AP	1 – 31	4 th AP
Balcony Rail	92 – 97 + 288 (6k)	Balcony Rail
Orchestra Pit	110, 111	Orchestra Pit
Grid (Up Stage Center)	112 – 123 (2 Soco Connections)	SR Ladders
Stage Right Gallery	178 – 231 (9 Soco Connections)	2 nd and 4 th Electrics
Stage Left Gallery	124 – 177 (9 Soco Connections)	1 st and 3 rd Electrics
Stage Left Gallery	Additional 48 Ch. Rack 450-497	5 th Electric, SL Ladders, SL Gallery
Down Stage Right Wall (Stage level)	246, 247	Down Stage Right Wall (Stage level)
Down Stage Left Wall (Stage level)	244, 245	Down Stage Left Wall (Stage level)
Up Stage Right Wall (Stage level)	284 – 286	Up Stage Right Wall (Stage level)
Up Stage Left Wall (Stage level)	281 – 283	Up Stage Left Wall (Stage level)
Up Stage Center Wall (Stage level)	287B (6k)	Up Stage Center Wall (Stage level)
Stage Right Floor (Floor Pockets)	257 – 265	Stage Right Floor (Floor Pockets)
Stage Left Floor (Floor Pockets)	248 – 256	Stage Left Floor (Floor Pockets)
Up Stage Floor (Floor Pockets)	263 – 280	Up Stage Floor (Floor Pockets)
Down Stage Floor (Floor Pockets)	232 – 243	Down Stage Floor (Floor Pockets)
House Right Torm (in Proscenium)	98 – 103	House Right Torm (in Proscenium)
House Left Torm (in Proscenium)	104 – 109	House Left Torm (in Proscenium)
House Lights	301 – 315	House Lights

:

Mesa Arts Center
Piper Repertory Theater Technical Information Packet
1 East Main Street, Mesa, AZ 85201

Equipment Inventory:

Stage Instruments

Quantity	Brand	Type	Wattage
8	ETC Source 4	10 Degree	750wt
40	ETC Source 4	19 Degree	575wt
50	ETC Source 4	26 Degree	575wt
78	ETC Source 4	36 Degree	575wt
10	ETC Source 4	50 Degree	575wt
70	ETC Source 4	Par	575wt
30	Stand Century	8" Fresnel	2kw
14	Ground Strip	6 Cell	1kw

Followspots:

2 Super Trooper (2K) Medium Throw 1600wt Follow spots located in enclosed spot booth at rear of house - catwalk level

Cable:

Soco, Stagepin and 2-fers are available

House Lighting Plot Description

- The Piper Theater house lighting plot is capable of up to 4 different color top washes on stage.
- A two color high side wash is available from the 1st, 2nd, 3rd and 4th electrics over stage
- 20 fixtures are also available on electrics for overhead specials. (5 each on 1st, 2nd, 3rd, and 4th Electrics)
- 3 separate washes are possible from FOH using 30 Source Four 19 degree fixtures.
- Up to 3 color Cyclorama wash is also available as well as FOH box boom and balcony rail positions.
- **NOTE: Not all fixtures may be available because they are being used on house plot**
- **Please speak to the MAC Production Supervisor to request a plot or more information**

Extra equipment available (Subject to availability)

- 4 High End Systems AF1000 Dataflash Strobe
- 2 Atomic 3000 Strobe
- Ultratec FX Radiance Haze Generator (Mounted on S.L. Midrail with a fan)
- Rosco 1700 Smoke Generator
- Ultratec LSG PFI-9D Low Fog Generator (additional equipment needed from outside vendor)

Mesa Arts Center
Piper Repertory Theater Technical Information Packet
1 East Main Street, Mesa, AZ 85201

Audio

Power:

Quantity	Voltage	Phase	Amperage	Location	Connection
2	120/208	3 Phase	200a	Upstage Right Wall	Cam
2	120/208	3 Phase	200a	Stage Left Wall	Cam

Control Location:

Located in the center main floor of the house 48' from plaster line. If a client provides their own console 100' snake is needed to pull from DSL to the mix position. Cable tunnel terminates at DSL.

- If the monitor console needs to setup Down Stage Right, an additional 75' extension is needed. The venue can provide a 100' snake and a 32 channel splitter box. A 100' extension may also be available.

Hearing Assist System:

Infrared hearing assist system headsets are available to patrons via the house management staff. Show Program is distributed by the audio system Digital Signal Processor and sourced from the mixing console or ambient room mic.

Paging System:

Paging System is routed to the upstairs and downstairs hallways, dressing rooms, Green Room, production office and patio. Paging locations are located DSR, DSL and in the Lighting Control Booth.

Front of House video monitoring is available in the Green Room, DSR and DSL.

Production Communication:

- 2 channel Clear-Com party line system w/ 7 wired single channel belt packs and headsets.
- 2 Clear-Com remote stations.
- 1 Clear Com FreeSpeak II 1.9GHz wireless base station w/5 Clear Com FSII-BP19 wireless beltpacks and headsets.
- 2 Clear Com (1 TW-12B/1 TW-12C) interfaces available

Equipment Inventory:

Front of House Mixing Console:

- Avid Venue SC48 digital mixing console with 48 mono input channels, 24 analog outputs, and 8 AES outputs. Venue Pak 3.1, Waves Gold and Vocal Rider plug-ins.

Playback:

- 1 Tascam CD-RW901SL
- 1 Tascam CD-RW900SL

Mesa Arts Center
Piper Repertory Theater Technical Information Packet
1 East Main Street, Mesa, AZ 85201

Speaker System: Renkus-Heinz P.A. package (included with rental of Piper Theater)

- Left, Center, Right Clusters, Each. (Flown)
 - 1 Renkus-Heinz CELF15-2K W/SSL15-7 low frequency module
 - 2 Renkus-Heinz CDT520/94 Horns (1 Main, 1 down fill)
- 1 Renkus-Heinz CELF15-2K w/SSL15-7 Low frequency module/subwoofer (Sub Bridged Mono)
- 5 TRC61 Front Fills built in to front of stage (L-C-R configuration)
- 6 Channels of Monitor Amplification (additional channels subject to availability)

Monitor Package (including Piper microphone inventory):

- Yamaha PM5D (subject to availability)
- Behringer X32 (subject to availability)
- 6 Yamaha SM-15V monitors
- 10 QSC K12 powered monitors (subject to availability)
- 16 Renkus-Heinz PN151/M9 15" powered wedges (subject to availability)
- 6 Renkus Heinz PN121/M12 12" powered wedges (subject to availability)

Mesa Arts Center
Piper Repertory Theater Technical Information Packet
 1 East Main Street, Mesa, AZ 85201

Microphones:

#	Make/Model	Type	#	Make/Model	Type
10	Shure SM58	Cardioid dynamic vocal	2	AKG C1000S	Cardioid condenser Instrument with switchable polar patterns via diaphragm insert
2	Shure SM 58s	Cardioid dynamic vocal	2	AKG 451 B	Cardioid Condenser
10	Shure SM Beta 57	Super cardioid dynamic vocal/instrument	2	Sennheiser 421	Cardioid dynamic instrument
2	Shure SM 81	Cardioid condenser Instrument	4	Sennheiser E614	Cardioid Condenser
4	Shure Beta 98	Miniature super cardioid condenser with Drum Mount	1	AMT M40	Cardioid Condenser Piano
1	Shure Beta 91	Large diaphragm super cardioid dynamic kick drum	6	Whirlwind Director	Passive D.I. Box
1	Shure Beta 52	Large diaphragm super cardioid dynamic kick drum bass	2	DOD 265	Passive D.I. Box
4	Crown PCC 160	Half-super cardioid condenser boundary	2	Rapco LTI-100	Laptop Interface
4	Audio Technica U853R	Cardioid condenser hanging type chorus	8	Hosa	5' 1/4" – 1/4" DI cable

(*note-additional miscellaneous lavalier and head worn microphones are available in limited supply in our microphone inventory)

(*note-additional miscellaneous clamps for piano, music stands and horn instruments available in limited quantity)

Mesa Arts Center
Piper Repertory Theater Technical Information Packet
1 East Main Street, Mesa, AZ 85201

Facility shared wireless microphones (Based on Availability, Additional Charge Applicable):

- 2 rack mounted Shure ULXD AD4Q receivers with 8 Shure ULXD2 handheld transmitters w/Shure SM58 capsules (Beta 87 capsules available) and 8 Shure ULXD1 belt packs w/Shure WL 154 cardioid lavalier capsules MM-PSM omnidirectional head worn microphones (Countryman E6 type) available.
- 1 rack mounted Shure ULXD AD4Q receivers with 4 Shure ULXD2 handheld transmitters w/Shure SM 58 capsules (Beta 58 capsules available) and 4 Shure ULXD1 belt packs w/Shure WL154 lavalier capsules MM-PSM omnidirectional head worn microphones (Countryman E6 type) available.
- 1 Rack mounted Shure ULXD AD4Q receivers with 4 Shure ULXD AD4Q handheld transmitters with Shure SM 58 capsules (Beta 58 capsules available) and 4 Shure ULXD1 belt packs with Shure WL154 Lavalier capsules and MM-PSM omnidirectional head worn microphones (Countryman E6 type) available
- 1 rack mounted Shure Axient AD4D in each venue with 2 AD2 handheld and 2 AD1 beltpack transmitters each. Countryman E5 head worn microphones available.

Both racks include Shure UA-845 Antenna Distribution units and Shure UA870 active directional antennas

Video

Projector:

- Barco DLP Laser Projector Model F90-4K13 Located on Balcony rail
 - Inputs: 3G-SDI, HDMI, DVI, HDBaseT

Projection Screen:

- 12'3" tall by 21' wide Da-Lite Front Projection Screen. Screen is hung from a stage baton and typically lives 14'5" upstage of proscenium line

Video Equipment:

- Roland V-800HD Mutli-format Video Switcher
 - 8 Channel, 16 Input (4 SDI, 4 Composite, 4 DVI-I/HDMI, 4 RGB/Component)
 - 6 Output (2 SDI + 2 DVI-D/HDMI + RGB/Component + Composite)
 - Multiviewer HDMI Output
- 2 MacBook Pro Laptop Computers
- 1 Dell Windows based laptop (Based on availability)

Mesa Arts Center
Piper Repertory Theater Technical Information Packet
1 East Main Street, Mesa, AZ 85201

Props

Orchestra Pit

Orchestra Pit (33'L x 12'W radius design) 290sq. ft – variable depth to 7' below stage level.
Static load capacity: 43,500 lbs. Lifting load capacity: 14,500 lbs.

Music:

Chairs: 200 Wenger Padded Black Chairs (subject to availability)

Music Stands: 200 Wenger Music Stands (subject to availability)

Stand Lights: 200 Stand Lights (subject to availability)

Conductor Podium: Wenger 2 Step Podium

Conductor Music Stand (subject to availability)

Platforms:

24 Wenger 4'x8' platforms (subject to availability)

8 Wenger 4'x4' platforms (subject to availability)

Legs to raise platforms to 8", 16" and 24" heights (subject to availability)

Dance Floor:

7 sections of Rosco Dance Floor: 5'3" x 60'

1 section of Rosco Dance Floor" 5'3" x 39' (Proscenium)

Lecterns:

2 Dalite Black Podiums (subject to availability)

Mesa Arts Center
Piper Repertory Theater Technical Information Packet
1 East Main Street, Mesa, AZ 85201

Wardrobe

Dressing Rooms:

- 2 Dressing Room (4-6 person capacity each) with shower and bathroom. 2 Located in US 1st Floor Hallway, 1 Located in the US 2nd Floor Hallway. Each with 1 wardrobe rack
- 3 Chorus Dressing Rooms (11-16 person capacity each) with showers (2) and bathroom. Located in US 2nd Floor Hallway. Each with 2 wardrobe racks

Wardrobe Area:

- Main laundry facility is located on the 2nd floor. This is shared between all theaters at the Mesa Arts Center and is subject to availability.
- Single Washer/Dryer may be available adjacent to Playhouse greenroom. Contact tech department for availability.
- 1 clothes rack is assigned each dressing room. 6 more racks may be available in wardrobe room (based on availability)
- 3 iron and 3 ironing boards (based on availability)
- 6 steamers (based on availability)
- 2 Whirlpool washing machines (based on availability)
- 2 Whirlpool dryers (based on availability)

Musician Warm Up Room/Multipurpose Room:

- Shared between all theaters at the Mesa Arts Center (Available based on other theaters' needs)
- Located in US 1st Floor Hallway
- Sound Dampened