



# Anita Cox Farnsworth Studio Theater Technical Information

---

Mesa Arts Center

4/18/2018

Mesa Arts Center  
Anita Cox Farnsworth Studio Theater Technical Information Packet

1 East Main Street, Mesa, AZ 85201  
Technical Contacts: Phone: (480)644-6590 Fax: (480) 644-6594

**Table of Contents**

General Information ..... 4

    Technical Services: ..... 4

    Programming..... 4

    Box Office:..... 4

    Rental Contact:..... 4

    Area Hotels:..... 4

Management:..... 5

    Green Room:..... 5

    Policies: ..... 5

Load-In Area ..... 5

    Load-In Access to Stage:..... 5

    Directions: ..... 5

Carpentry ..... 6

    Seating:..... 6

    Stage Dimensions:..... 6

    Stage Floor ..... 6

    Seating Chart Front 65 Seats (Standard room setup) ..... 7

    Seating Chart 2 Sided 99 Seats (typical setup)..... 8

    Seating Chart 1A (Typical setup) ..... 9

    Studio Empty Room ..... 10

    House Draperies (Goods):..... 11

    Support Areas: ..... 11

Lighting..... 11

    Control: ..... 11

    Dimmers:..... 11

    Circuits: ..... 11

    Circuit Locations:..... 12

Mesa Arts Center  
Anita Cox Farnsworth Studio Theater Technical Information Packet

1 East Main Street, Mesa, AZ 85201  
Technical Contacts: Phone: (480)644-6590 Fax: (480) 644-6594

Equipment Inventory: ..... 13  
House Lighting Plot Description ..... 13  
Audio ..... 13  
    Control Location: ..... 13  
    Hearing Assist System: ..... 13  
    Paging System: ..... 13  
    Production Communication: ..... 13  
    Equipment Inventory: ..... 14  
Props ..... 15  
    Music: ..... 15  
    Platforms: ..... 15  
    Dance Floor: ..... 15  
    Lecturns: ..... 15  
Wardrobe ..... 15  
    Dressing Rooms: ..... 15  
    Wardrobe Area: ..... 15

Mesa Arts Center  
Anita Cox Farnsworth Studio Theater Technical Information Packet

1 East Main Street, Mesa, AZ 85201  
Technical Contacts: Phone: (480)644-6590 Fax: (480) 644-6594

**General Information**

**Technical Services:**

**Director of Production**  
**Robby Elliott**  
P: (480) 644-6597  
E: [Robby.Elliott@mesaartscenter.com](mailto:Robby.Elliott@mesaartscenter.com)

**Production Supervisor /Primary Advancing Contact**  
**Ashley Keen**  
P: (480) 644-6617  
E: [Ashley.keen@mesaartscenter.com](mailto:Ashley.keen@mesaartscenter.com)

**Technical Director**  
**Troy Buckey**  
P: (480) 644-6592  
E: [Troy.Buckey@mesaartscenter.com](mailto:Troy.Buckey@mesaartscenter.com)

**Programming:**

**Director of Theater and Operations**  
**Randy Vogel**  
P: (480) 644-6603  
E: [Randall.vogel@mesaartscenter.com](mailto:Randall.vogel@mesaartscenter.com)

**Rental Contact:**

**Kim Forbes**  
P: (480) 644-6580  
E: [Kimberly.Forbes@mesaartscenter.com](mailto:Kimberly.Forbes@mesaartscenter.com)

**Box Office:**

**Andrew Douglas**  
P: (480) 644-6507  
E: [Andrew.Douglas@mesaartscenter.com](mailto:Andrew.Douglas@mesaartscenter.com)

**Area Hotels:**

**Marriott Mesa**  
200 North Centennial Way  
Mesa, AZ 85201  
P: (480) 898-8300

**Comfort Inn and Suites**  
651 East Main Street  
Mesa, AZ 85201  
P: (480) 621-6375

**Best Western Mezona Inn**  
250 West Main Street  
Mesa, AZ 85201  
P: (480) 834-9233

**Holiday Inn**  
1600 S Country Club Drive  
Mesa, AZ 85210  
P: (480) 863 - 4780

# Mesa Arts Center

## Anita Cox Farnsworth Studio Theater Technical Information Packet

1 East Main Street, Mesa, AZ 85201  
Technical Contacts: Phone: (480)644-6590 Fax: (480) 644-6594

### Management

#### Green Room:

There is a dedicated green room for the Studio Theatre with a patio that is shared with Playhouse Theatre.

#### Policies:

- Lobby typically opens 1 hour prior to curtain with house opening 30 minutes prior to curtain.
- The Fire Curtain must not be obstructed in any manner which could prevent its complete contact with the stage floor when deployed.
- All scenery drops and fabric must be flame proofed. Random testing of articles will occur.
- All wood must be flame-proofed (fire-treated).
- All doors in the facility are fire rated and must not be obstructed in any way to prevent their closure.

#### Load-In Access to Stage:

- Two loading docks at stage level.
- Dock can accommodate 1 53' trailer (tractors have to detach), and 1 box truck simultaneously
- Driver must remain to move truck if necessary.
- Loading dock doors 10'W x 10'H
- Interior stage door is 8'11" W x 12' H
- Cargo must be ramped off or lifted off trucks. Loading Doors are at street level.
- There is no forklift on site
- Trucks and trailers must be moved to south surface lot
- Post-show storage is NOT available at the Mesa Arts Center. All items must leave at load-out. The Mesa Arts Center is not responsible for any items left behind.

#### Directions:

1. From Phoenix take Loop 202 East.
2. Exit Country Club Drive and head south to Main St.
3. Turn Left (East) on Main St. and travel a half mile until you come to Serrine/Centennial Way
4. Turn Right (South) on Serrine/Centennial Way
5. Take your first right into the service drive behind the Sunrise Bank. Follow the drive as it curves to the left. Park on the left, Performer entrance is on the right at the glass doors.

# Mesa Arts Center

## Anita Cox Farnsworth Studio Theater Technical Information Packet

1 East Main Street, Mesa, AZ 85201

Technical Contacts: Phone: (480)644-6590 Fax: (480) 644-6594

### Carpentry

#### Seating:

House Capacity: There are multiple Seating options available (see pages 7-9). These are the most common setups. Please contact Assistant Technical Director for more options and pricing.

#### Stage Dimensions:

Room Dimensions: 41' 10" wide x 40' 6" long

Gridiron: 15' Average (pipes are 14' 6", 15' or 15' 6" depending on location)

#### Stage Floor

- 1" Maple Hardwood, painted black
- Lagging into MAC floors is allowed, but should all hardware must be Grade 5 or higher. Client will be responsible for all costs incurred to the MAC in the repair of the holes.
- No Traps are available

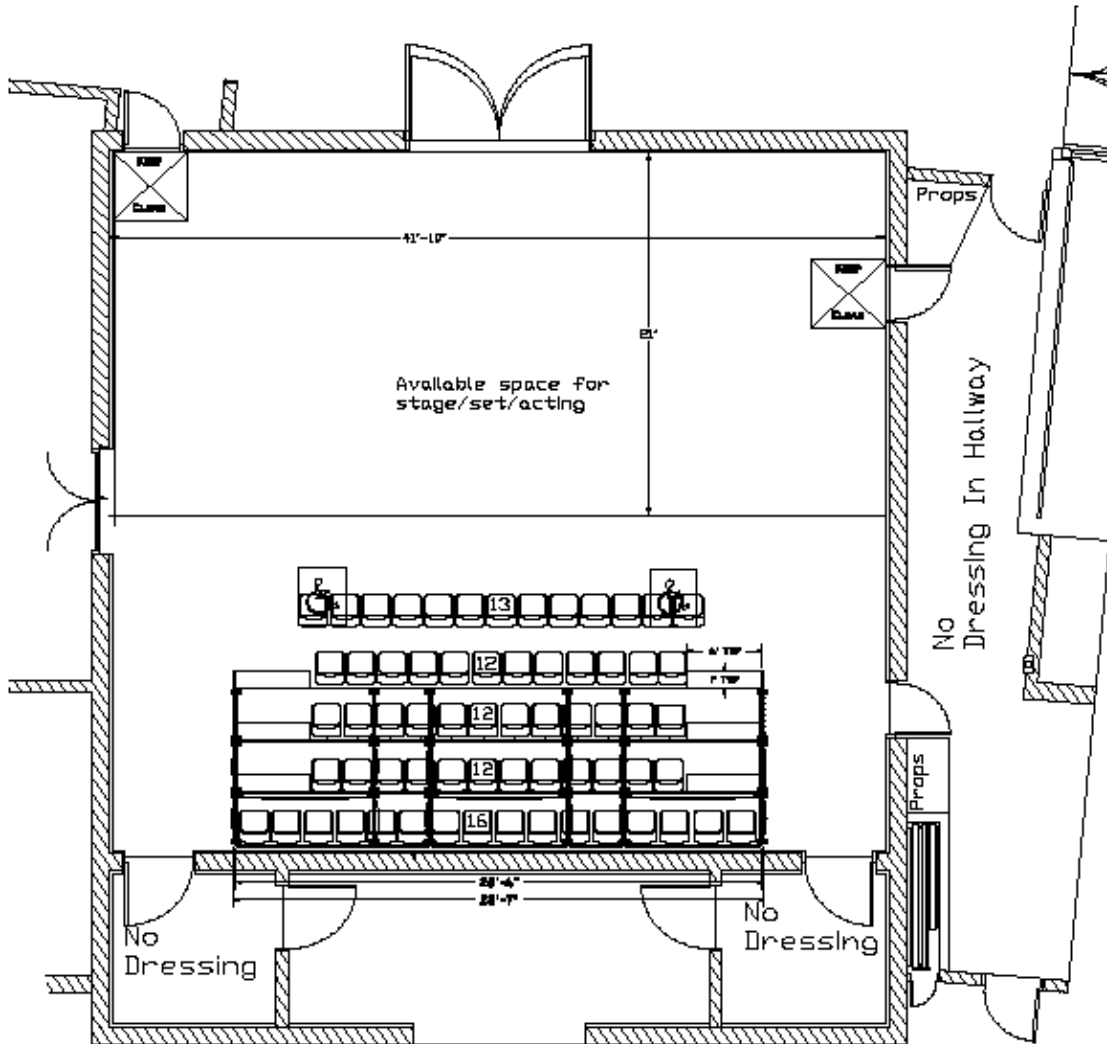
#### Non-Use Areas

- As per the Fire Marshall, floor areas blocked off in red floor paint must never be obstructed.
- Purple painted areas in the backstage hallway are approved as storage areas. Any unpainted area in the backstage hallway must remain clear.

Mesa Arts Center  
Anita Cox Farnsworth Studio Theater Technical Information Packet

1 East Main Street, Mesa, AZ 85201  
Technical Contacts: Phone: (480)644-6590 Fax: (480) 644-6594

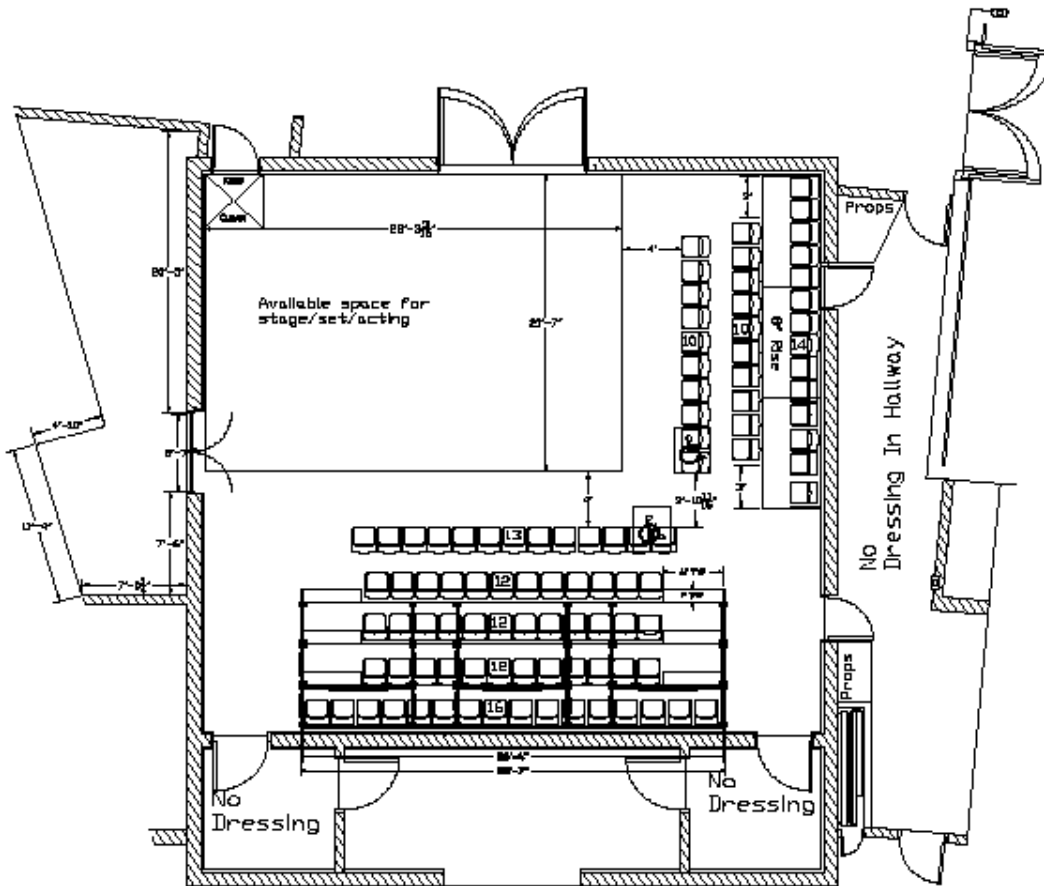
Seating Chart Front 65 Seats (Standard Setup)



Front  
65 Seats or  
61 Seats+2 Wheel Chairs

Mesa Arts Center  
Anita Cox Farnsworth Studio Theater Technical Information Packet  
1 East Main Street, Mesa, AZ 85201  
Technical Contacts: Phone: (480)644-6590 Fax: (480) 644-6594

Seating Chart 2 Sided 99 Seats (Typical Setup)



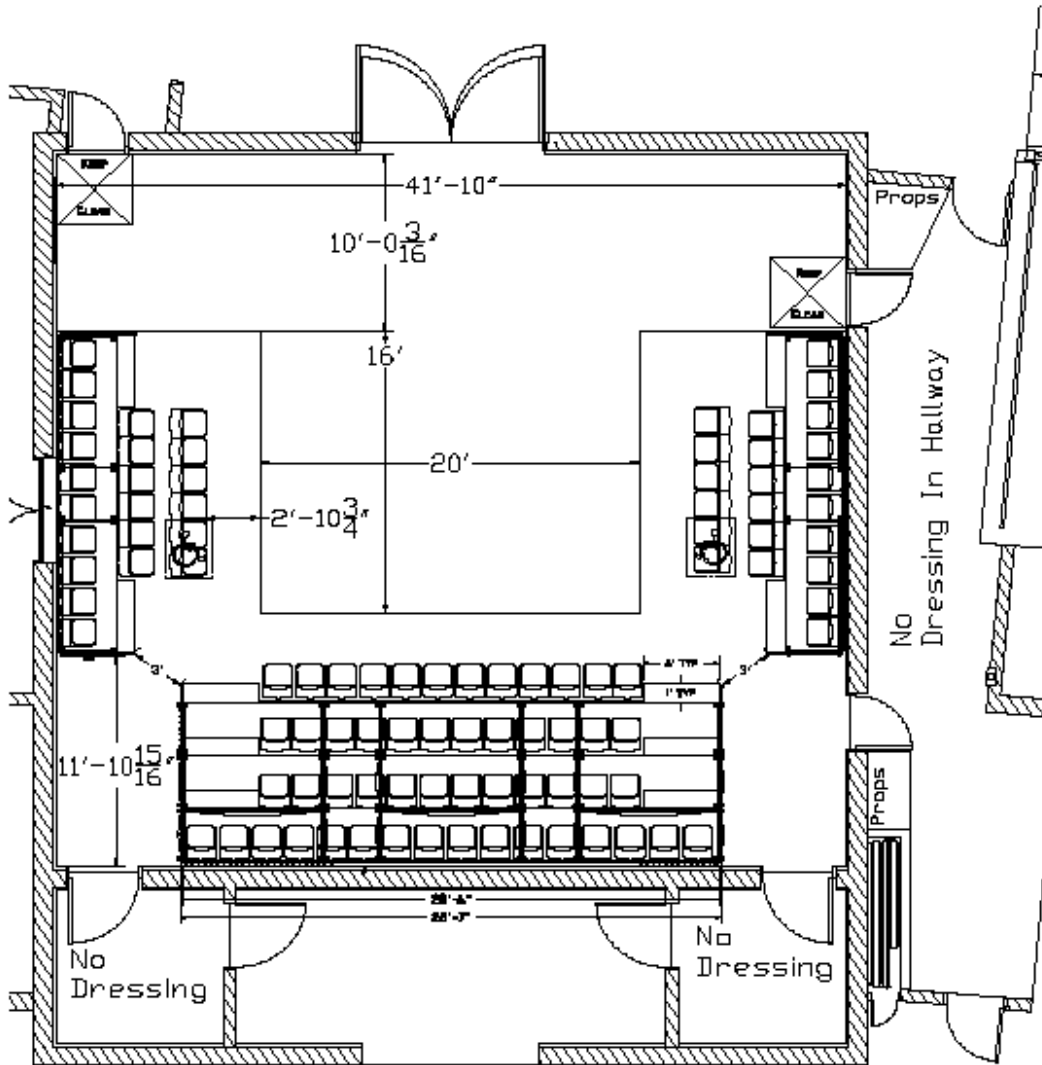
2 Sided  
99 Seats or  
95 Seats+2 Wheel Chairs



Mesa Arts Center  
Anita Cox Farnsworth Studio Theater Technical Information Packet

1 East Main Street, Mesa, AZ 85201  
Technical Contacts: Phone: (480)644-6590 Fax: (480) 644-6594

Seating Chart 1A (Typical Setup)

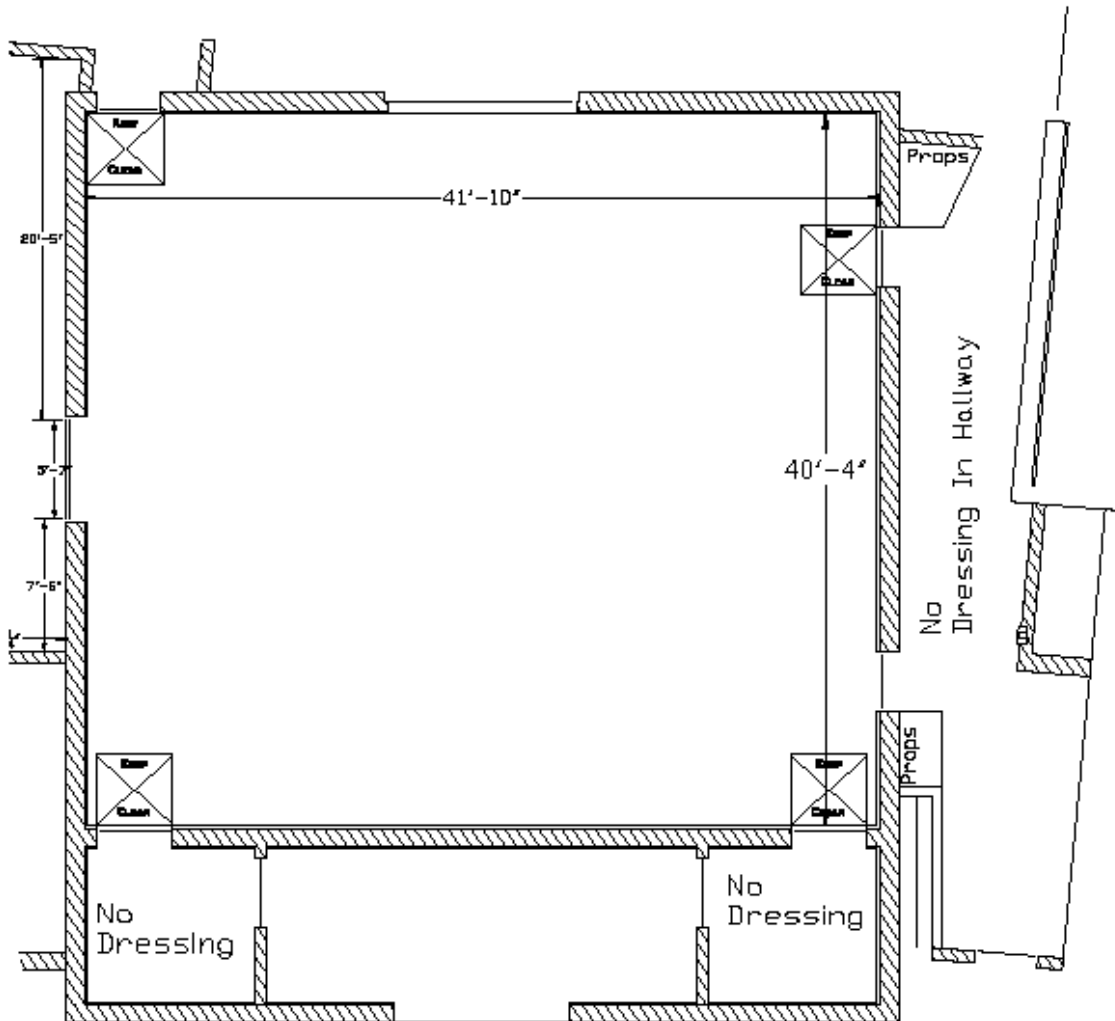


STUDIO THEATER 1A  
96 Seats or  
92 Seats+2 Wheel Chairs

Mesa Arts Center  
Anita Cox Farnsworth Studio Theater Technical Information Packet

1 East Main Street, Mesa, AZ 85201  
Technical Contacts: Phone: (480)644-6590 Fax: (480) 644-6594

**Studio Empty room (Extra charges may apply)**



STUDIO THEATER  
Empty room

# Mesa Arts Center

## Anita Cox Farnsworth Studio Theater Technical Information Packet

1 East Main Street, Mesa, AZ 85201  
 Technical Contacts: Phone: (480)644-6590 Fax: (480) 644-6594

### House Draperies (Soft Goods):

Drapery	Quantity	Size	Fullness	Fabric	Lining	Color	Notes
Border	2	40' x 3'	None	25 oz Velour	None	Black	Nap Down
Leg	4	8' x 15'	None	25 oz Velour	None	Black	Nap Down
Blackout Panels	3	15' x 15'	None	25 oz Velour	None	Black	Nap Down
Cyclorama	1	40' x 15'	None	Lino	None	White	Seamless
Upstage Blackout	1	42' x 14'9"	None	20 oz Crescent	None	Black	Custom fit to upstage wall

### Support Areas:

#### Crossover:

There is no dedicated crossover. Closest crossover is the Loading Dock Upstage with Access to Stage Right and Stage Left

#### Access:

From Front of House: Hallway Stage Left (House Right) to Upstage Hallway

Dressing Rooms are located on the 2<sup>nd</sup> floor in the backstage hallway. Dressing rooms are accessible by elevator in loading dock area.

There is a curtained off area in loading dock to create backstage space for props and quick change booths.

#### Storage:

Storage is not available before or after the show. All items must leave at load-out. There is a designated area in the loading dock for props and scenery storage. There is also pipe and drape to make 2 quick change booths.

Space must be confined to area determined by the Mesa Arts Center, as this dock is shared between 3 theatres.

## Lighting

### Control:

- ETC Element
- 250 Channel Capability
- 1024 outputs
- 40 submasters

### Dimmers:

- 132 ETC Sensor Dimmers, 2.4kW dimmer

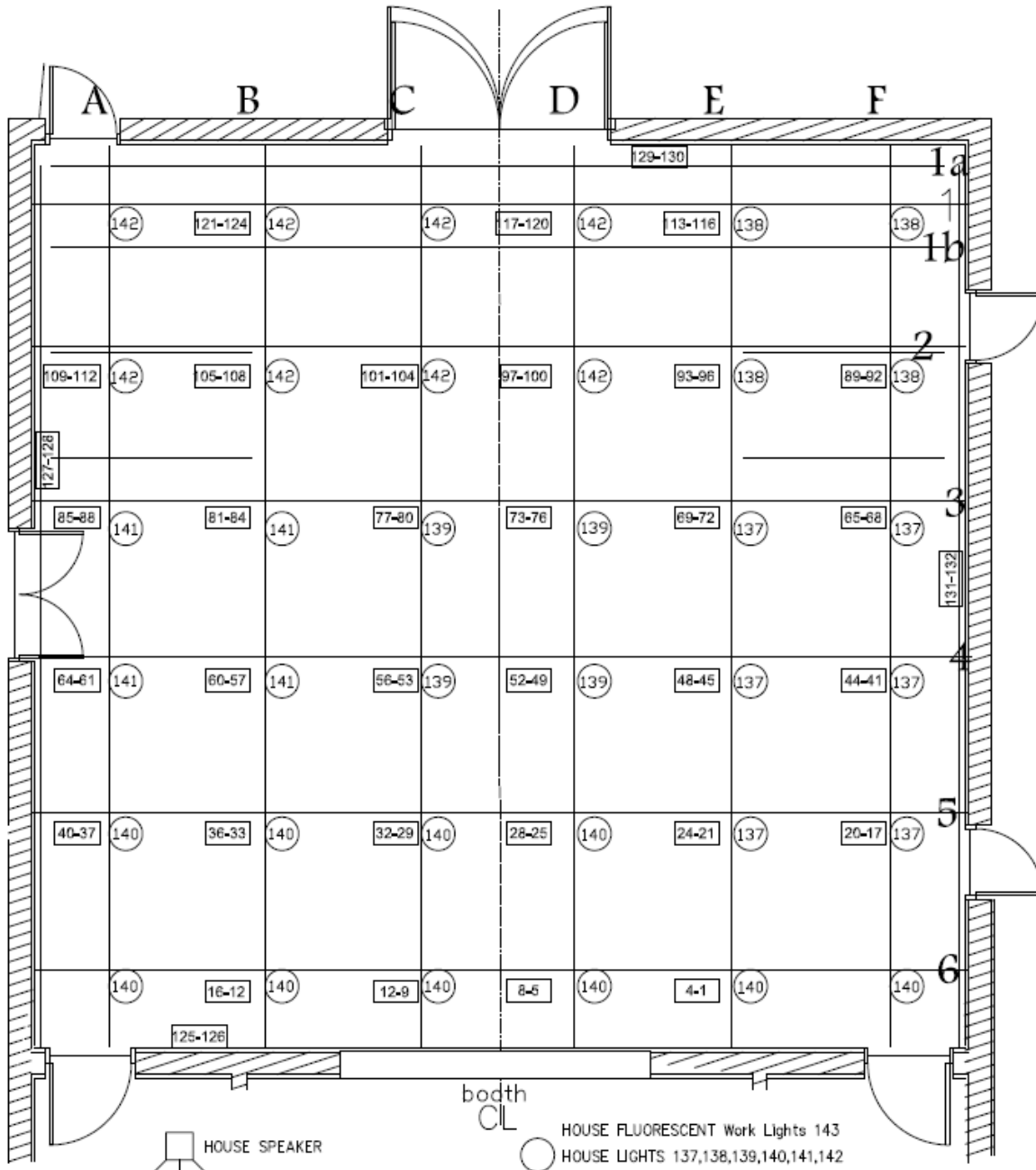
### Circuits:

- 132 – 2.4kw circuits. Fixed Positions on Grid with stagepin tail connections.
- Grid pipes vary from 14' 6" to 15' 6"
- Circuits 125 – 132 are at ground level, all other circuits are in the grid area

# Mesa Arts Center Anita Cox Farnsworth Studio Theater Technical Information Packet

1 East Main Street, Mesa, AZ 85201  
 Technical Contacts: Phone: (480)644-6590 Fax: (480) 644-6594

## Circuit Locations:



# Mesa Arts Center

## Anita Cox Farnsworth Studio Theater Technical Information Packet

1 East Main Street, Mesa, AZ 85201  
 Technical Contacts: Phone: (480)644-6590 Fax: (480) 644-6594

### Stage Instruments:

Quantity	Brand	Type	Wattage
30	ETC Source 4	36 Degree	575wt
30	ETC Source 4	50 Degree	575wt
30	ETC Fresnel	7" Fresnel	575wt
5	L&E	3 Cell Cyc	1 kw

### Cable and Accessories:

STAGE PIN CABLE				ADAPTERS		MULTI-PIN		
5'	10'	20'	2-FER	EDISON-PIN	PIN-EDISON	30'	B/IN	B/OUT
24	21	9	17	2	10	1	1	1

19°-50° GEL FRAME	FRESNEL GEL FRAME	B-SIZE GOBO HOLDER	EDISON EXTENSION CORDS
60	30	60	0

### House Lighting Plot Description

There is no standard house plot. Lighting instruments from inventory are stored on 2 meat racks and are to be struck upon load out of show.

### Extra equipment available (Subject to availability)

- 4 High End Systems AF1000 Dataflash Strobe
- 2 Atomic 3000 Strobe

## Audio

### Control Location:

Located in the booth on the downstage wall, 15' in the air. The Control Booth is located behind booth windows. The windows do slide open.

### Hearing Assist System:

Infrared hearing assist system is available to patrons via the house management staff. Group must provide 1 line level output to feed the hearing assist and backstage audio feed.

# Mesa Arts Center

## Anita Cox Farnsworth Studio Theater Technical Information Packet

1 East Main Street, Mesa, AZ 85201

Technical Contacts: Phone: (480)644-6590 Fax: (480) 644-6594

### Paging System:

Paging System to the upstage hallway, upstairs backstage hallway, and dressing rooms. Paging location is located in the Lighting Control Booth.

### Production Communication:

Single Channel Clear-Com Production Communication System. 5 wired belt packs are available. 1 Clear-Com Squawk Box is available.

### Equipment Inventory:

#### Front of House Mixing Consoles:

- Allen & Heath GL4000 24 Channel with Signal Effects processing

#### Processing Gear:

- 2 Klark-Teknik DN-360 2 Channel EQ
- 1 DBX 1046 4 Channel Compressor/ Limiter
- 1 Yamaha SPX2000
- 1 Tascam MD-CD1 CD Player/Mini Disc Player (independent playback)
- 1 Furman PL-8 series power conditioners

#### Speaker System:

##### Tannoy P.A. package (comes with rental of Studio Theater)

- 4 Tannoy V12 Full range Loudspeakers (Hanging, can be moved)
- 2 Yamaha SM-15V Stage Monitors
- 4 channels of amplification for PA speakers and monitor speakers

#### Microphones:

Studio Rental Inventory (comes with rental of Studio Theater)

#	Make/Model	Type
4	Shure SM 58	Dynamic Cardioid Vocal
4	Shure SM 57	Dynamic Cardioid Instrument
4	Sennheiser 614	Condenser Cardioid Instrumental
1	Shure PG 48S	Dynamic Cardioid Vocal
2	DOD 265	Direct Input Box
1	LTI-100	Laptop Interface

# Mesa Arts Center

## Anita Cox Farnsworth Studio Theater Technical Information Packet

1 East Main Street, Mesa, AZ 85201  
Technical Contacts: Phone: (480)644-6590 Fax: (480) 644-6594

### Props

#### Music:

**Chairs:** 200 Wenger Padded Black Chairs (subject to availability)

**Music Stands:** 200 Wenger Music Stands (subject to availability)

**Stand Lights:** 200 Stand Lights (subject to availability)

**Conductor Podium:** Wenger 2 Step Podium with Conductor Music Stand (subject to availability)

#### Platforms:

24 Wenger 4'x8' platforms (subject to availability)

8 Wenger 4'x4' platforms (subject to availability)

Legs to raise platforms to 8", 16", 24", and 32" heights (subject to availability)

#### Dance Floor:

5 sections of Rosco Dance Floor: 5'3" x 35'

#### Lecterns:

2 Da lite Black Podiums (subject to availability)

### Wardrobe

#### Dressing Rooms:

- 3 Dressing Rooms (5 person capacity) with showers (1) and bathroom. Located in upstage 2<sup>nd</sup> Floor Hallway
- 1 Dressing Rooms (8 person capacity) with shower (1) and bathroom. Located in upstage 2<sup>nd</sup> Floor Hallway

#### Wardrobe Area/Laundry Facility:

- Main laundry facility is located on the 2nd floor. This is shared between all theaters at the Mesa Arts Center and is subject to availability.
- Single Washer/Dryer may be available adjacent to Playhouse greenroom. Contact tech department for availability.
- 1 clothes rack is located in each dressing room. 6 more racks may be available in wardrobe room (based on availability)
- 3 iron and 3 ironing boards (based on availability)
- 6 steamers (based on availability)
- 2 Whirlpool washing machines (based on availability)
- 2 Whirlpool dryers (based on availability)