



# Anita Cox Farnsworth Studio Theater Technical Information

---

Mesa Arts Center

8/20/2014

Mesa Arts Center  
Anita Cox Farnsworth Studio Theater Technical Information Packet

1 East Main Street, Mesa, AZ 85201  
Technical Contacts: Phone: (480)644-6590 Fax: (480) 644-6594

**Table of Contents**

General Information ..... 4  
    Technical Services: ..... 4  
    Programming..... 4  
    Box Office:..... 4  
    Rental Contact:..... 4  
    Area Hotels:..... 4  
Management:..... 5  
    Green Room:..... 5  
    Policies: ..... 5  
Load-In Area ..... 5  
    Load-In Access to Stage:..... 5  
    Directions: ..... 5  
Carpentry ..... 6  
    Seating:..... 6  
    Stage Dimensions:..... 6  
    Stage Floor ..... 6  
    Seating Chart Front 65 Seats (Standard room setup) ..... 7  
    Seating Chart 2 Sided 99 Seats (typical setup)..... 8  
    Seating Chart 1A (Typical setup) ..... 9  
    Studio Empty Room ..... 10  
    House Draperies (Goods):..... 11  
    Support Areas: ..... 11  
Lighting..... 11  
    Power: ..... 11  
    Control: ..... 11  
    Dimmers:..... 11  
    Circuits: ..... 11

Mesa Arts Center  
Anita Cox Farnsworth Studio Theater Technical Information Packet

1 East Main Street, Mesa, AZ 85201  
Technical Contacts: Phone: (480)644-6590 Fax: (480) 644-6594

Circuit Locations:..... 12

Equipment Inventory: ..... 13

House Lighting Plot Description..... 13

Audio ..... 13

    Power: ..... 13

    Control Location:..... 13

    Hearing Assist System: ..... 13

    Paging System: ..... 13

    Production Communication:..... 13

    Equipment Inventory: ..... 14

Props ..... 15

    Music:..... 15

    Platforms:..... 15

    Dance Floor: ..... 15

    Lecturns:..... 15

Wardrobe ..... 15

    Dressing Rooms:..... 15

    Wardrobe Area: ..... 15

# Mesa Arts Center

## Anita Cox Farnsworth Studio Theater Technical Information Packet

1 East Main Street, Mesa, AZ 85201  
Technical Contacts: Phone: (480)644-6590 Fax: (480) 644-6594

### General Information

#### Technical Services:

Technical Director

Michael Tipton

P: (480) 644-6590

F: (480) 644-6594

[E: Michael.Tipton@mesaartscenter.com](mailto:Michael.Tipton@mesaartscenter.com)

Assistant Technical Director

Jason Krull

P: (480) 644-6591

F: (480) 644-6594

[E: Jason.Krull@mesaartscenter.com](mailto:Jason.Krull@mesaartscenter.com)

Assistant Technical Director

Robby Elliott

P: (480) 644-6597

F: (480) 644-6594

[E: robby.elliott@mesaartscenter.com](mailto:robby.elliott@mesaartscenter.com)

#### Programming:

Director of Theater and Operations

Randy Vogel

P: (480) 644-6603

[E: Randell.Vogel@mesaartscenter.com](mailto:Randell.Vogel@mesaartscenter.com)

#### Box Office:

Andrew Douglas

P: (480) 644-6507

[E: Andrew.Douglas@mesaartscenter.com](mailto:Andrew.Douglas@mesaartscenter.com)

#### Rental Contact:

Kim Forbes

P: (480) 644-6580

[E: Kimberly.Forbes@mesaartscenter.com](mailto:Kimberly.Forbes@mesaartscenter.com)

#### Area Hotels:

##### Marriott Mesa

200 North Centennial Way

Mesa, AZ 85201

P: (480) 898-8300

##### Comfort Inn and Suites

651 East Main Street

Mesa, AZ 85201

P: (480) 621-6375

##### Best Western Mezona Inn

250 West Main Street

Mesa, AZ 85201

P: (480) 834-9233

##### Holiday Inn

1600 S Country Club Drive

Mesa, AZ 85210

P: (480) 863 - 4780

# Mesa Arts Center

## Anita Cox Farnsworth Studio Theater Technical Information Packet

1 East Main Street, Mesa, AZ 85201  
Technical Contacts: Phone: (480)644-6590 Fax: (480) 644-6594

### Management

#### Green Room:

There is a dedicated green room for the Studio Theatre with patio shared with Playhouse Theatre

#### Policies:

- Lobby typically opens 1 hour prior to curtain with house opening 30 minutes prior to curtain. Normal curtain time is 7:00 PM
- All scenery, drops and fabric must be *flame proofed*. *Random testing of articulated will occur.*
- *All wood must be flame proofed (fire-treated).*
- All doors in the Facility are Fire rated and must not be obstructed in any way to prevent their closure.

### Load-In Area

#### Load-In Access to Stage:

- Two loading docks at stage level.
- Dock can accommodate 1 53' trailer (tractors have to detach), and 1 box truck simultaneously
- Driver must remain to move truck if necessary.
- Loading dock doors 10'W x 10'H
- Interior stage door is 8'11"W x 12' H
- Cargo must be ramped off or lifted off trucks. Loading Doors are at street level.
- There is no forklift on site
- Trucks and trailers must be moved to south surface lot
- *\*Storage is NOT available at the Mesa Arts Center. All items must leave at load-out.*
- This Dock is shared with Playhouse Theater and Piper Theater

#### Directions:

1. From Phoenix take Loop 202 East.
2. Exit Country Club Drive and head south to Main St.
3. Turn Left (East) on Main St. and travel a half mile until you come to Surrine/Centennial Way
4. Turn Right (South) on Surrine/Centennial Way
5. Take your first right into the service drive behind the Sunrise Bank. Follow the drive as it curves to the left. Park on the left, Performer entrance is on the right at the glass doors.

# Mesa Arts Center

## Anita Cox Farnsworth Studio Theater Technical Information Packet

1 East Main Street, Mesa, AZ 85201  
Technical Contacts: Phone: (480)644-6590 Fax: (480) 644-6594

### Carpentry

#### Seating:

House Capacity: There are 5 Arena Seating options (see pages 7-11). The typical set-up seats 92 Loose Seats + 2 Wheelchair seats.

#### Stage Dimensions:

Room Dimensions: 41' 10" Wide x 40' 6" long

Gridiron: 15' Average (pipes are 14'6", 15' or 15'6" depending on location)

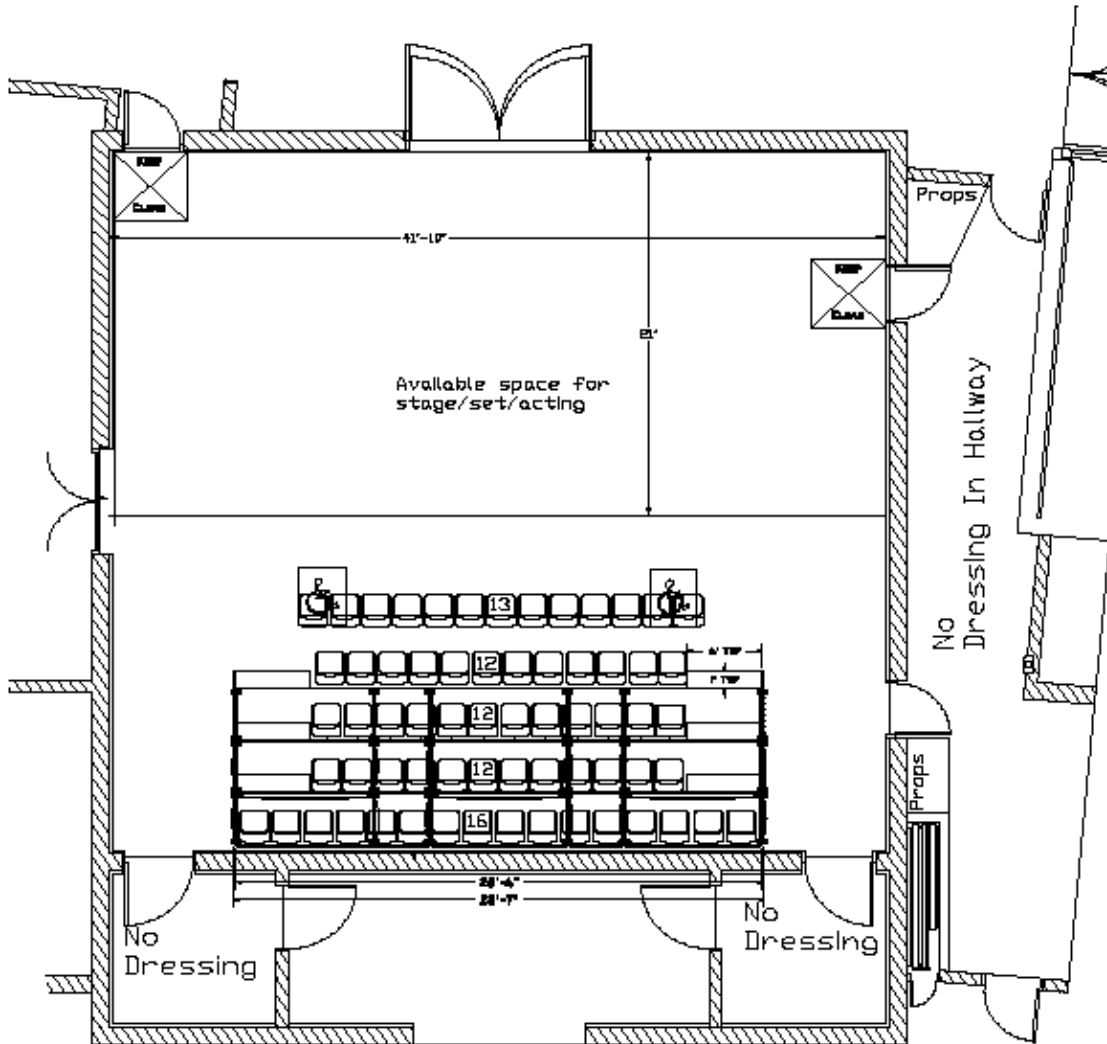
#### Stage Floor

- Resilient wood floor topped with 1/4" masonite painted black
- Lagging is allowed. All holes must be plugged after use
- No Traps are available

Mesa Arts Center  
Anita Cox Farnsworth Studio Theater Technical Information Packet

1 East Main Street, Mesa, AZ 85201  
Technical Contacts: Phone: (480)644-6590 Fax: (480) 644-6594

Seating Chart Front 65 Seats (Standard Setup)

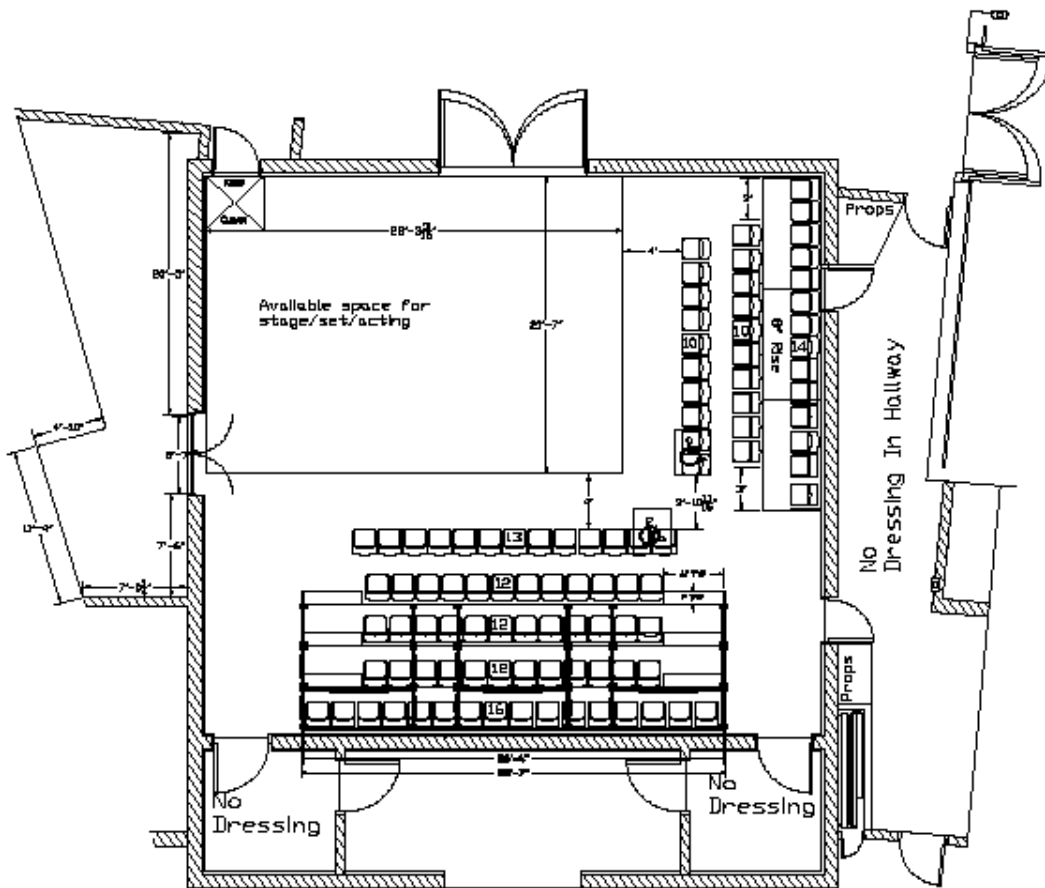


Front  
65 Seats or  
61 Seats+2 Wheel Chairs

# Mesa Arts Center Anita Cox Farnsworth Studio Theater Technical Information Packet

1 East Main Street, Mesa, AZ 85201  
Technical Contacts: Phone: (480)644-6590 Fax: (480) 644-6594

## Seating Chart 2 Sided 99 Seats (Typical Setup)



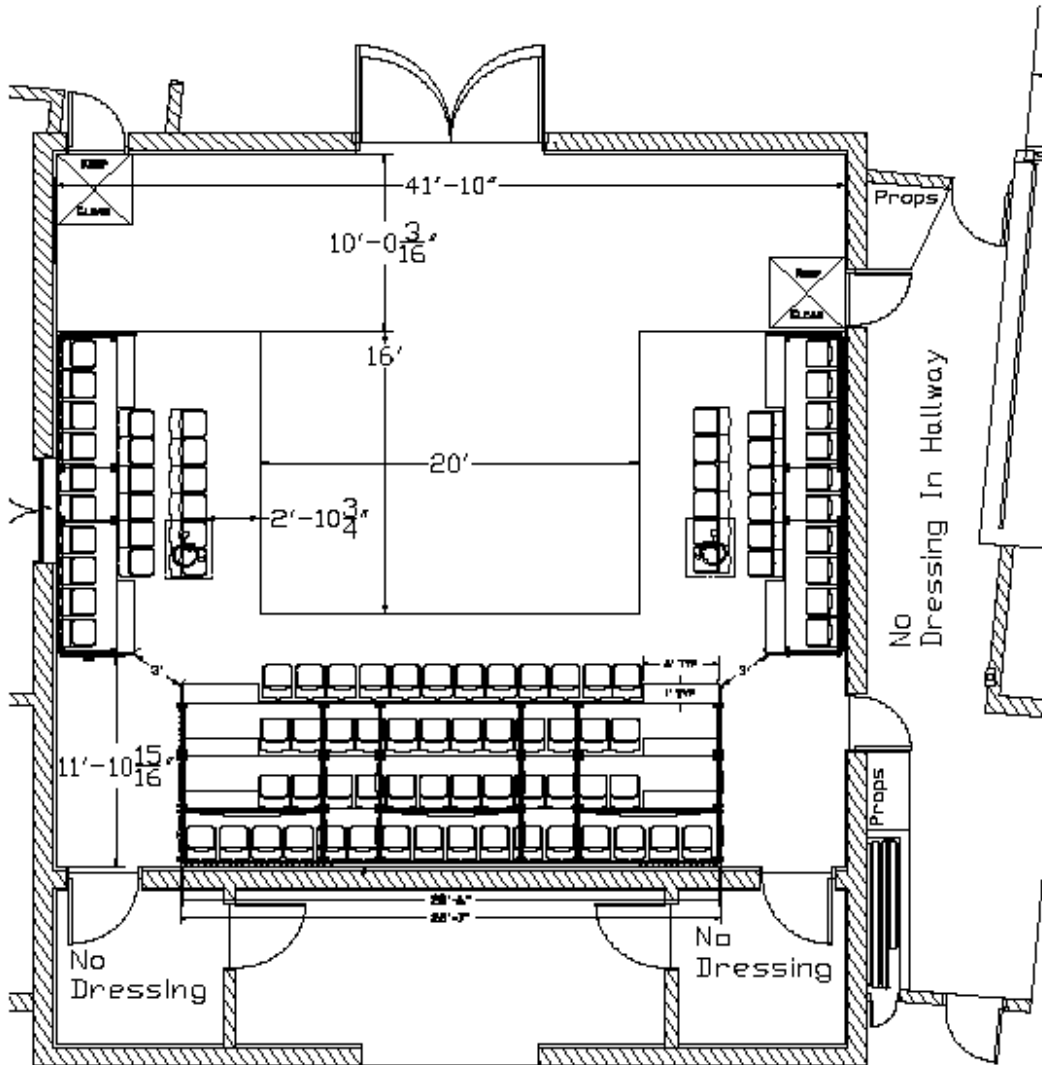
2 Sided  
99 Seats or  
95 Seats+2 Wheel Chairs



Mesa Arts Center  
Anita Cox Farnsworth Studio Theater Technical Information Packet

1 East Main Street, Mesa, AZ 85201  
Technical Contacts: Phone: (480)644-6590 Fax: (480) 644-6594

Seating Chart 1A (Typical Setup)

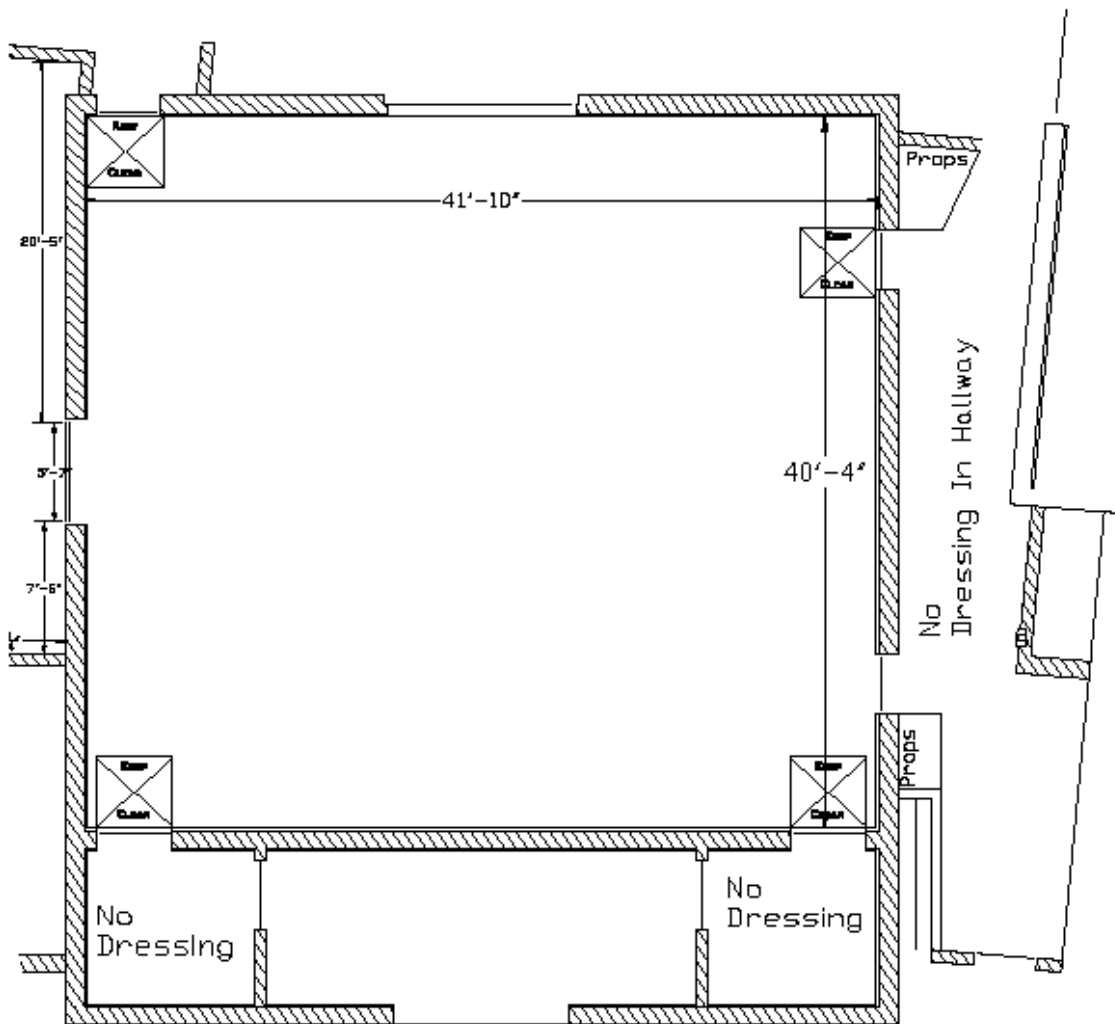


STUDIO THEATER 1A  
96 Seats or  
92 Seats+2 Wheel Chairs

Mesa Arts Center  
Anita Cox Farnsworth Studio Theater Technical Information Packet

1 East Main Street, Mesa, AZ 85201  
Technical Contacts: Phone: (480)644-6590 Fax: (480) 644-6594

**Studio Empty room (Extra charges may apply)**



STUDIO THEATER  
Empty room

# Mesa Arts Center

## Anita Cox Farnsworth Studio Theater Technical Information Packet

1 East Main Street, Mesa, AZ 85201  
Technical Contacts: Phone: (480)644-6590 Fax: (480) 644-6594

### House Draperies (Goods):

Drapery	Quantity	Size	Fullness	Fabric	Lining	Color	Notes
Border	2	40' x 3'	None	25 oz Velour	None	Black	Nap Down
Leg	4	8' x 15'	None	25 oz Velour	None	Black	Nap Down
Blackout Panels	3	15' x 15'	None	25 oz Velour	None	Black	Nap Down
Cyclorama	1	40' x 15'	None	Lino	None	White	Seamless

### Support Areas:

#### Crossover:

There is no dedicated crossover. Closest crossover is the Loading Dock Upstage with Access to Stage Right and Stage Left

#### Access:

From Front of House: Hallway Stage Left (House Right) to Upstage Hallway

From Dressing Rooms: Dressing Rooms are located on the 2<sup>nd</sup> floor Upstage Hallway, accessible elevator in loading dock area.

#### Storage:

Storage is not available before or after the show. All items must leave at load-out. There is a designated area in loading dock for props and scenery storage. There is also pipe and drape to make 2 quick change booths. Space must be confined to area determined by the Mesa Arts Center, as this dock is shared between 3 theatres.

## Lighting

### Power:

Quantity	Voltage	Phase	Amperage	Location	Connection
1	120/208	3 Phase	200a	Stage Right Wall	Cam

### Control:

- ETC Element
- 250 Channel Capability
- 1024 outputs
- 40 submasters

### Dimmers:

- 132 ETC Sensor Dimmers, 2.4kW dimmer

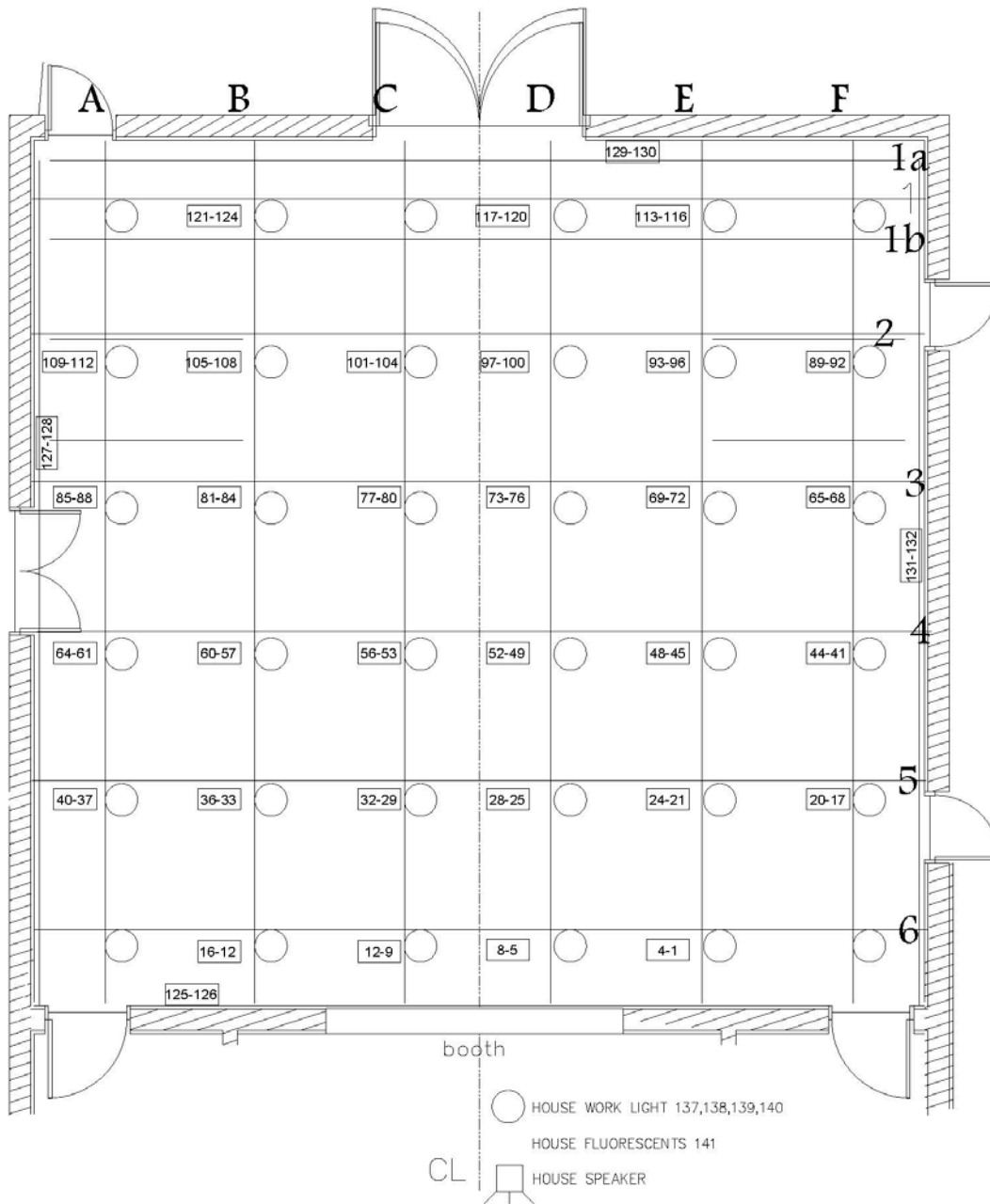
### Circuits:

- 132 – 2.4kw circuits. Fixed Positions on Grid with stagepin tail connections.
- Grid pipes vary from 14' 6" to 15' 6"
- Circuits 125 – 132 are at ground level, all other circuits are in the grid area

# Mesa Arts Center Anita Cox Farnsworth Studio Theater Technical Information Packet

1 East Main Street, Mesa, AZ 85201  
 Technical Contacts: Phone: (480)644-6590 Fax: (480) 644-6594

## Circuit Locations:



# Mesa Arts Center

## Anita Cox Farnsworth Studio Theater Technical Information Packet

1 East Main Street, Mesa, AZ 85201  
Technical Contacts: Phone: (480)644-6590 Fax: (480) 644-6594

### Stage Instruments:

Quantity	Brand	Type	Wattage
30	ETC Source 4	36 Degree	575wt
30	ETC Source 4	50 Degree	575wt
30	ETC Fresnel	7" Fresnel	575wt
5	L&E	3 Cell Cyc	1 kw

### Cable:

Stagepin and 2-fers are available

### House Lighting Plot Description

There is no standard house plot. Lighting instruments from inventory are stored on 2 meat racks and are to be struck upon load out of show.

### Extra equipment available

- 4 High End Systems AF1000 Dataflash Strobe (Subject to availability)
- Rosco Vortex gobo rotators (Subject to availability)

## Audio

### Power:

See Lighting Section for Power Availability

### Control Location:

Located in the booth on the Downstage Wall 15' in the air. This is behind glass windows, and they do slide open.

### Hearing Assist System:

Infrared hearing assist system is available to patrons via the house management staff. Group must provide 1 line level output to feed the hearing assist and backstage audio feed.

### Paging System:

Paging System to the US Hallway, Upstairs Dressing Room Hallway, and Dressing Rooms. Paging location is located in the Lighting Control Booth.

### Production Communication:

Single Channel Clear-Com Production Communication System. 5 wired belt packs available, 1 Clear-Com Squawk Box available.

# Mesa Arts Center

## Anita Cox Farnsworth Studio Theater Technical Information Packet

1 East Main Street, Mesa, AZ 85201  
Technical Contacts: Phone: (480)644-6590 Fax: (480) 644-6594

### Equipment Inventory:

#### Front of House Mixing Consoles:

- Allen & heath GL4000 24 Channel with Signal Effects processing

#### Processing Gear:

- 2 Klark-Teknik DN-360 2 Channel EQ
- 1 DBX 1046 4 Channel Compressor/ Limiter
- 1 Yamaha SPX2000
- 1 Tascam MD-CD1 CD Player/Mini Disc Player (independent playback)
- 1 Furman PL-8 series power conditioners

#### Speaker System:

##### Tannoy P.A. package (comes with rental of Studio Theater)

- 4 Tannoy V12 Full range Loudspeakers (Hanging, can be moved)
- 2 Yamaha SM-15V Stage Monitors
- 4 channels of amplification for PA speakers and Monitor speakers
  - If you need all 4 Loudspeakers and monitors you must run one set in parallel or rent more amplifiers.

#### Microphones:

Studio Rental Inventory (comes with rental of Studio Theater)

#	Make/Model	Type
4	Shure SM 58	Dynamic Cardioid Vocal
4	Shure SM 57	Dynamic Cardioid Instrument
4	Sennheiser 614	Condenser Cardioid Instrumental
1	Shure PG 48S	Dynamic Cardioid Vocal
2	DOD 265	Direct Input Box

# Mesa Arts Center

## Anita Cox Farnsworth Studio Theater Technical Information Packet

1 East Main Street, Mesa, AZ 85201  
Technical Contacts: Phone: (480)644-6590 Fax: (480) 644-6594

### Props

#### Music:

**Chairs:** 200 Wenger Padded Black Chairs (subject to availability)

**Music Stands:** 200 Wenger Music Stands (subject to availability)

**Stand Lights:** 200 Stand Lights (subject to availability)

**Conductor Podium:** Wenger 2 Step Podium with Conductor Music Stand (subject to availability)

#### Platforms:

24 Wenger 4'x8' platforms (subject to availability)

8 Wenger 4'x4' platforms (subject to availability)

Legs to raise platforms to 8", 16", 24", and 32" heights(subject to availability)

#### Dance Floor:

5 sections of Rosco Dance Floor: 5'3" x 35'

#### Lecturns:

2 Dalite Black Podiums (subject to availability)

1 Dalite Wood Veneer Podium (subject to availability)

### Wardrobe

#### Dressing Rooms:

- 4 Quad Dressing Rooms (4 person capacity) with showers (1) and bathroom. Located in US 2<sup>nd</sup> Floor Hallway

#### Wardrobe Area:

- Shared between all theaters at the Mesa Arts Center (Available based on other theaters' needs)
- Located on 2<sup>nd</sup> floor
- 1 clothes rack is located in each dressing room. 6 more racks are available in wardrobe room
- 3 iron and 3 ironing boards are available
- 6 steamers
- 2 Whirlpool washing machines
- 2 Whirlpool dryers